

MECR Antibody (Center)
Affinity Purified Rabbit Polyclonal Antibody (Pab)
Catalog # AP20364c

Specification

MECR Antibody (Center) - Product Information

Application	WB,E
Primary Accession	O9BV79
Reactivity	Human
Host	Rabbit
Clonality	Polyclonal
Isotype	Rabbit IgG
Calculated MW	40462
Antigen Region	201-229

MECR Antibody (Center) - Additional Information

Gene ID 51102

Other Names

Trans-2-enoyl-CoA reductase, mitochondrial, Nuclear receptor-binding factor 1, HsNrpf-1, NRBF-1, MECR, NBRF1

Target/Specificity

This MECR antibody is generated from rabbits immunized with a KLH conjugated synthetic peptide between 201-229 amino acids from the Central region of human MECR.

Dilution

WB~~1:1000

Format

Purified polyclonal antibody supplied in PBS with 0.09% (W/V) sodium azide. This antibody is purified through a protein A column, followed by peptide affinity purification.

Storage

Maintain refrigerated at 2-8°C for up to 2 weeks. For long term storage store at -20°C in small aliquots to prevent freeze-thaw cycles.

Precautions

MECR Antibody (Center) is for research use only and not for use in diagnostic or therapeutic procedures.

MECR Antibody (Center) - Protein Information

Name MECR

Synonyms NBRF1

Function Catalyzes the NADPH-dependent reduction of trans-2-enoyl thioesters in mitochondrial fatty acid synthesis (fatty acid synthesis type II). Fatty acid chain elongation in mitochondria uses acyl carrier protein (ACP) as an acyl group carrier, but the enzyme accepts both ACP and CoA thioesters as substrates in vitro. Displays a preference for medium-chain over short- and long-chain substrates (PubMed:[12654921](#), PubMed:[18479707](#), PubMed:[27817865](#)). May provide the octanoyl chain used for lipoic acid biosynthesis, regulating protein lipoylation and mitochondrial respiratory activity particularly in Purkinje cells (By similarity). Involved in iron homeostasis; affecting Fe-S cluster assembly and ceramide metabolism (PubMed:[37653044](#)). Required for proper morphology and bioenergetic functions of mitochondria (PubMed:[37653044](#)). Required for maintenance of neurons (By similarity).

Cellular Location

[Isoform 1]: Mitochondrion

Tissue Location

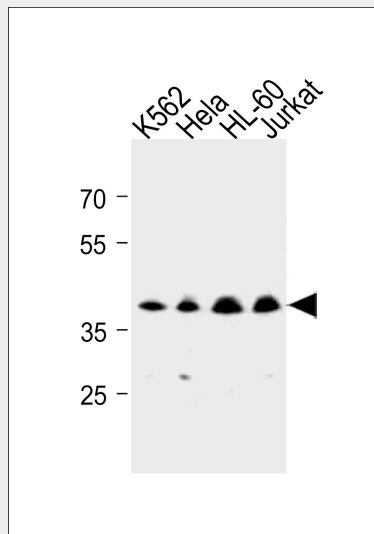
Highly expressed in skeletal and heart muscle. Expressed at lower level in placenta, liver, kidney and pancreas Weakly or not expressed in lung.

MECR Antibody (Center) - Protocols

Provided below are standard protocols that you may find useful for product applications.

- [Western Blot](#)
- [Blocking Peptides](#)
- [Dot Blot](#)
- [Immunohistochemistry](#)
- [Immunofluorescence](#)
- [Immunoprecipitation](#)
- [Flow Cytometry](#)
- [Cell Culture](#)

MECR Antibody (Center) - Images



MECR Antibody (Center) (Cat. #AP20364c) western blot analysis in K562, HeLa, HL-60, Jurkat cell line lysates (35ug/lane). This demonstrates the MECR antibody detected the MECR protein (arrow).

MECR Antibody (Center) - Background

Catalyzes the reduction of trans-2-enoyl-CoA to acyl-CoA with chain length from C6 to C16 in an NADPH-dependent manner with preference to medium chain length substrate. May have a role in the mitochondrial synthesis of fatty acids.