

**PCDH11Y Antibody (C-term)**  
**Affinity Purified Rabbit Polyclonal Antibody (Pab)**  
**Catalog # AP20352b**

**Specification**

---

**PCDH11Y Antibody (C-term) - Product Information**

Application	WB,E
Primary Accession	<a href="#">O9BZA8</a>
Other Accession	<a href="#">O9BZA7</a>
Reactivity	Human
Host	Rabbit
Clonality	Polyclonal
Isotype	Rabbit IgG
Calculated MW	146775
Antigen Region	1066-1095

**PCDH11Y Antibody (C-term) - Additional Information**

**Gene ID** 83259

**Other Names**

Protocadherin-11 Y-linked, Protocadherin-11, Protocadherin on the Y chromosome, PCDH-Y, Protocadherin prostate cancer, Protocadherin-PC, Protocadherin-22, PCDH11Y, PCDH11, PCDH22, PCDHY

**Target/Specificity**

This PCDH11Y antibody is generated from rabbits immunized with a KLH conjugated synthetic peptide between 1066-1095 amino acids from the C-terminal region of human PCDH11Y.

**Dilution**

WB~~1:2000

**Format**

Purified polyclonal antibody supplied in PBS with 0.09% (W/V) sodium azide. This antibody is purified through a protein A column, followed by peptide affinity purification.

**Storage**

Maintain refrigerated at 2-8°C for up to 2 weeks. For long term storage store at -20°C in small aliquots to prevent freeze-thaw cycles.

**Precautions**

PCDH11Y Antibody (C-term) is for research use only and not for use in diagnostic or therapeutic procedures.

**PCDH11Y Antibody (C-term) - Protein Information**

**Name** PCDH11Y

**Synonyms** PCDH11, PCDH22, PCDHY

**Function** Potential calcium-dependent cell-adhesion protein.

**Cellular Location**

Cell membrane; Single-pass type I membrane protein

**Tissue Location**

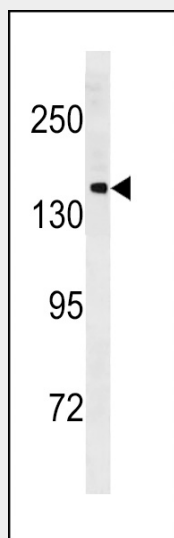
Expressed strongly in fetal brain and brain (cortex, amygdala, thalamus, substantia nigra, hippocampus, caudate nucleus and corpus callosum). Expressed at low level in testis Expressed in apoptosis-resistant cells.

**PCDH11Y Antibody (C-term) - Protocols**

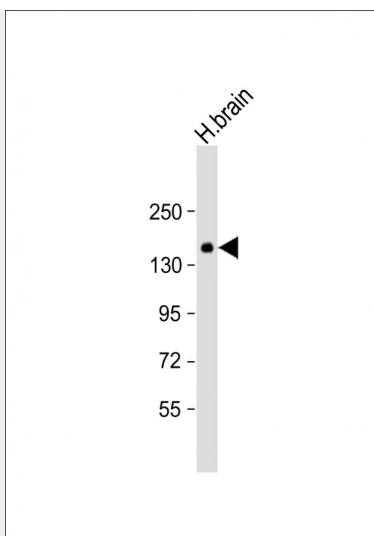
Provided below are standard protocols that you may find useful for product applications.

- [Western Blot](#)
- [Blocking Peptides](#)
- [Dot Blot](#)
- [Immunohistochemistry](#)
- [Immunofluorescence](#)
- [Immunoprecipitation](#)
- [Flow Cytometry](#)
- [Cell Culture](#)

**PCDH11Y Antibody (C-term) - Images**



PCDH11Y Antibody (C-term) (Cat. #AP20352b) western blot analysis in NCI-H292 cell line lysates (35ug/lane). This demonstrates the PCDH11Y antibody detected the PCDH11Y protein (arrow).



Anti-PCDH11Y Antibody (C-term) at 1:2000 dilution + human brain lysate Lysates/proteins at 20  $\mu$ g per lane. Secondary Goat Anti-Rabbit IgG, (H+L), Peroxidase conjugated at 1/10000 dilution. Predicted band size : 148 kDa Blocking/Dilution buffer: 5% NFDN/TBST.

#### **PCDH11Y Antibody (C-term) - Background**

Potential calcium-dependent cell-adhesion protein.