

PHKA2 Antibody (N-term)
Affinity Purified Rabbit Polyclonal Antibody (Pab)
Catalog # AP20348a**Specification**

PHKA2 Antibody (N-term) - Product Information

| | |
|-------------------|------------------------|
| Application | WB,E |
| Primary Accession | P46019 |
| Other Accession | P46018 |
| Reactivity | Human |
| Predicted | Rabbit |
| Host | Rabbit |
| Clonality | Polyclonal |
| Isotype | Rabbit IgG |
| Calculated MW | 138408 |
| Antigen Region | 285-314 |

PHKA2 Antibody (N-term) - Additional Information**Gene ID** 5256**Other Names**

Phosphorylase b kinase regulatory subunit alpha, liver isoform, Phosphorylase kinase alpha L subunit, PHKA2, PHKLA, PYK

Target/Specificity

This PHKA2 antibody is generated from rabbits immunized with a KLH conjugated synthetic peptide between 285-314 amino acids from the N-terminal region of human PHKA2.

Dilution

WB~~1:1000

Format

Purified polyclonal antibody supplied in PBS with 0.09% (W/V) sodium azide. This antibody is purified through a protein A column, followed by peptide affinity purification.

Storage

Maintain refrigerated at 2-8°C for up to 2 weeks. For long term storage store at -20°C in small aliquots to prevent freeze-thaw cycles.

Precautions

PHKA2 Antibody (N-term) is for research use only and not for use in diagnostic or therapeutic procedures.

PHKA2 Antibody (N-term) - Protein Information**Name** PHKA2

Synonyms PHKLA, PYK

Function Phosphorylase b kinase catalyzes the phosphorylation of serine in certain substrates, including troponin I. The alpha chain may bind calmodulin.

Cellular Location

Cell membrane; Lipid-anchor; Cytoplasmic side

Tissue Location

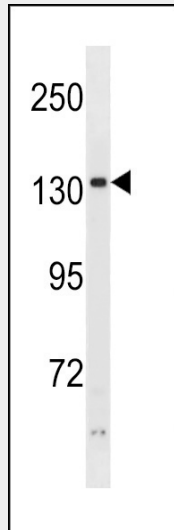
Predominantly expressed in liver and other non- muscle tissues

PHKA2 Antibody (N-term) - Protocols

Provided below are standard protocols that you may find useful for product applications.

- [Western Blot](#)
- [Blocking Peptides](#)
- [Dot Blot](#)
- [Immunohistochemistry](#)
- [Immunofluorescence](#)
- [Immunoprecipitation](#)
- [Flow Cytometry](#)
- [Cell Culture](#)

PHKA2 Antibody (N-term) - Images



PHKA2 Antibody (N-term) (Cat. #AP20348a) western blot analysis in ZR-75-1 cell line lysates (35ug/lane). This demonstrates the PHKA2 antibody detected the PHKA2 protein (arrow).

PHKA2 Antibody (N-term) - Background

Phosphorylase b kinase catalyzes the phosphorylation of serine in certain substrates, including troponin I. The alpha chain may bind calmodulin.