

**NALD2 Antibody (C-term)**  
**Affinity Purified Rabbit Polyclonal Antibody (Pab)**  
**Catalog # AP20342b**

**Specification**

---

**NALD2 Antibody (C-term) - Product Information**

Application	WB,E
Primary Accession	<a href="#">O9Y3Q0</a>
Other Accession	<a href="#">O9CZR2</a>
Reactivity	Human
Predicted	Mouse
Host	Rabbit
Clonality	Polyclonal
Isotype	Rabbit IgG
Antigen Region	507-535

**NALD2 Antibody (C-term) - Additional Information**

**Gene ID** 10003

**Other Names**

N-acetylated-alpha-linked acidic dipeptidase 2, Glutamate carboxypeptidase III, GCP III, N-acetylated-alpha-linked acidic dipeptidase II, NAALADase II, NAALAD2

**Target/Specificity**

This NALD2 antibody is generated from rabbits immunized with a KLH conjugated synthetic peptide between 507-535 amino acids from the C-terminal region of human NALD2.

**Dilution**

WB ~ ~ 1:1000

**Format**

Purified polyclonal antibody supplied in PBS with 0.09% (W/V) sodium azide. This antibody is purified through a protein A column, followed by peptide affinity purification.

**Storage**

Maintain refrigerated at 2-8°C for up to 2 weeks. For long term storage store at -20°C in small aliquots to prevent freeze-thaw cycles.

**Precautions**

NALD2 Antibody (C-term) is for research use only and not for use in diagnostic or therapeutic procedures.

**NALD2 Antibody (C-term) - Protein Information**

**Name** NAALAD2

**Function** Has N-acetylated-alpha-linked-acidic dipeptidase (NAALADase) activity. Also exhibits a

dipeptidyl-peptidase IV type activity. Inactivates the peptide neurotransmitter N-acetylaspartylglutamate.

#### Cellular Location

Cell membrane {ECO:0000250|UniProtKB:Q04609}; Single-pass type II membrane protein {ECO:0000250|UniProtKB:Q04609}

#### Tissue Location

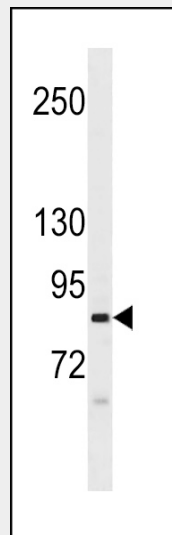
Highest expression in the testis. Also found in ovary and spleen. Weak expression in prostate, heart and placenta. In brain, expressed in striatum, parietal cortex and ventral striatum with lower levels in hippocampus, brain stem, putamen and superior colliculus

### NALD2 Antibody (C-term) - Protocols

Provided below are standard protocols that you may find useful for product applications.

- [Western Blot](#)
- [Blocking Peptides](#)
- [Dot Blot](#)
- [Immunohistochemistry](#)
- [Immunofluorescence](#)
- [Immunoprecipitation](#)
- [Flow Cytometry](#)
- [Cell Culture](#)

### NALD2 Antibody (C-term) - Images



NALD2 Antibody (C-term) (Cat. #AP20342b) western blot analysis in CEM cell line lysates (35ug/lane). This demonstrates the NALD2 (C-term) antibody detected the NALD2 (C-term) protein (arrow).

### NALD2 Antibody (C-term) - Background

Has N-acetylated-alpha-linked-acidic dipeptidase (NAALADase) activity. Also exhibits a dipeptidyl-peptidase IV type activity. Inactivate the peptide neurotransmitter N-acetylaspartylglutamate.