

TRX1 Antibody (C-term)
Affinity Purified Rabbit Polyclonal Antibody (Pab)
Catalog # AP20333b**Specification**

TRX1 Antibody (C-term) - Product Information

Application	WB,E
Primary Accession	P17586
Host	Rabbit
Clonality	Polyclonal
Isotype	Rabbit IgG
Antigen Region	387-414

TRX1 Antibody (C-term) - Additional Information**Other Names**

Triplex capsid protein VP19C, Virion protein UL38, UL38

Target/Specificity

This TRX1 antibody is generated from rabbits immunized with a KLH conjugated synthetic peptide between 387-414 amino acids from the C-terminal region of human TRX1.

Dilution

WB~~1:1000

Format

Purified polyclonal antibody supplied in PBS with 0.09% (W/V) sodium azide. This antibody is purified through a protein A column, followed by peptide affinity purification.

Storage

Maintain refrigerated at 2-8°C for up to 2 weeks. For long term storage store at -20°C in small aliquots to prevent freeze-thaw cycles.

Precautions

TRX1 Antibody (C-term) is for research use only and not for use in diagnostic or therapeutic procedures.

TRX1 Antibody (C-term) - Protein Information

Name TRX1 {ECO:0000255|HAMAP-Rule:MF_04018}

Function Structural component of the T=16 icosahedral capsid. The capsid is composed of pentamers and hexamers of major capsid protein/MCP, which are linked together by heterotrimers called triplexes. These triplexes are formed by a single molecule of triplex protein 1/TRX1 and two copies of triplex protein 2/TRX2. Additionally, TRX1 is required for efficient transport of TRX2 to the nucleus, which is the site of capsid assembly.

Cellular Location

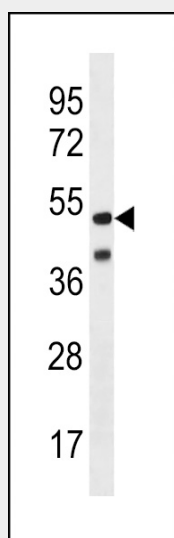
Virion {ECO:0000255|HAMAP-Rule:MF_04018}. Host nucleus {ECO:0000255|HAMAP-Rule:MF_04018}

TRX1 Antibody (C-term) - Protocols

Provided below are standard protocols that you may find useful for product applications.

- [Western Blot](#)
- [Blocking Peptides](#)
- [Dot Blot](#)
- [Immunohistochemistry](#)
- [Immunofluorescence](#)
- [Immunoprecipitation](#)
- [Flow Cytometry](#)
- [Cell Culture](#)

TRX1 Antibody (C-term) - Images



TRX1 Antibody (C-term) (Cat. #AP20333b) western blot analysis in Herpes Simplex X1, Grade 2 lysates (35ug/lane). This demonstrates the TRX1 antibody detected the TRX1 protein (arrow).

TRX1 Antibody (C-term) - Background

Structural component of the T=16 icosahedral capsid. The capsid is composed of pentamers and hexamers of VP5, which are linked together by heterotrimers called triplex. These triplex are formed by a single molecule of VP19C and two copies of VP23 which bridge major capsid protein VP5 multimers together. Triplexes occupy the local threefold positions between capsid hexamers and pentamers (By similarity).