

SLC28A1 Antibody (Center)
Affinity Purified Rabbit Polyclonal Antibody (Pab)
Catalog # AP20317c

Specification

SLC28A1 Antibody (Center) - Product Information

Application	WB,E
Primary Accession	O00337
Other Accession	O62667
Reactivity	Human
Predicted	Pig
Host	Rabbit
Clonality	Polyclonal
Isotype	Rabbit IgG
Calculated MW	71584
Antigen Region	381-409

SLC28A1 Antibody (Center) - Additional Information

Gene ID 9154

Other Names

Sodium/nucleoside cotransporter 1, Concentrative nucleoside transporter 1, CNT 1, hCNT1, Na(+)/nucleoside cotransporter 1, Sodium-coupled nucleoside transporter 1, Solute carrier family 28 member 1, SLC28A1, CNT1

Target/Specificity

This SLC28A1 antibody is generated from rabbits immunized with a KLH conjugated synthetic peptide between 381-409 amino acids from the Central region of human SLC28A1.

Dilution

WB~~1:2000

Format

Purified polyclonal antibody supplied in PBS with 0.09% (W/V) sodium azide. This antibody is purified through a protein A column, followed by peptide affinity purification.

Storage

Maintain refrigerated at 2-8°C for up to 2 weeks. For long term storage store at -20°C in small aliquots to prevent freeze-thaw cycles.

Precautions

SLC28A1 Antibody (Center) is for research use only and not for use in diagnostic or therapeutic procedures.

SLC28A1 Antibody (Center) - Protein Information

Name SLC28A1 ([HGNC:11001](#))

Function Sodium and pyrimidine nucleoside symporter of the plasma membrane that imports uridine, thymidine and cytidine into cells by coupling their transport to the transmembrane sodium electrochemical gradient. Also transports adenosine, an atypical substrate transported with high apparent affinity, but low maximum velocity. Therefore, exhibits the transport characteristics of the nucleoside transport system cit or N2 subtype (N2/cit) (PubMed:[10455109](#), PubMed:[14701834](#), PubMed:[15194733](#), PubMed:[21795683](#), PubMed:[21998139](#), PubMed:[30658162](#), PubMed:[32126230](#), PubMed:[9124315](#)). Involved in renal nucleoside (re)absorption (PubMed:[30658162](#)).

Cellular Location

Cell membrane; Multi-pass membrane protein {ECO:0000250|UniProtKB:Q62674}. Apical cell membrane; Multi-pass membrane protein {ECO:0000250|UniProtKB:Q62674}

Tissue Location

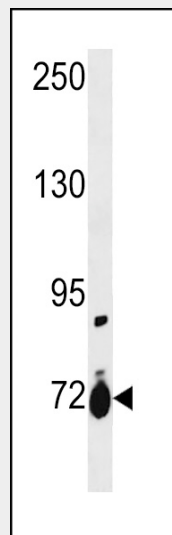
Expressed in kidney..

SLC28A1 Antibody (Center) - Protocols

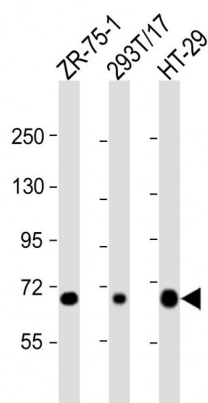
Provided below are standard protocols that you may find useful for product applications.

- [Western Blot](#)
- [Blocking Peptides](#)
- [Dot Blot](#)
- [Immunohistochemistry](#)
- [Immunofluorescence](#)
- [Immunoprecipitation](#)
- [Flow Cytometry](#)
- [Cell Culture](#)

SLC28A1 Antibody (Center) - Images



SLC28A1 Antibody (Center) (Cat. #AP20317c) western blot analysis in ZR-75-1 cell line lysates (35ug/lane). This demonstrates the SLC28A1 antibody detected the SLC28A1 protein (arrow).



All lanes : Anti-SLC28A1 Antibody (Center) at 1:2000 dilution Lane 1: ZR-75-1 whole cell lysate
 Lane 2: 293T/17 whole cell lysate Lane 3: HT-29 whole cell lysate Lysates/proteins at 20 µg per lane. Secondary Goat Anti-Rabbit IgG, (H+L), Peroxidase conjugated at 1/10000 dilution. Predicted band size : 72 kDa Blocking/Dilution buffer: 5% NFDM/TBST.

SLC28A1 Antibody (Center) - Background

Sodium-dependent and pyrimidine-selective. Exhibits the transport characteristics of the nucleoside transport system cit or N2 subtype (N2/cit) (selective for pyrimidine nucleosides and adenosine). It also transports the antiviral pyrimidine nucleoside analogs 3'-azido-3'-deoxythymidine (AZT) and 2',3'-dideoxycytidine (ddC). It may be involved in the intestinal absorption and renal handling of pyrimidine nucleoside analogs used to treat acquired immunodeficiency syndrome (AIDS). It has the following selective inhibition: adenosine, thymidine, cytidine, uridine >> guanosine, inosine.