

**PLXDC2 Antibody (N-term)**  
**Affinity Purified Rabbit Polyclonal Antibody (Pab)**  
**Catalog # AP20309a**

**Specification**

---

**PLXDC2 Antibody (N-term) - Product Information**

Application	WB,E
Primary Accession	<a href="#">O6UX71</a>
Other Accession	<a href="#">O9DC11</a>
Reactivity	Human
Predicted	Mouse
Host	Rabbit
Clonality	Polyclonal
Isotype	Rabbit IgG
Calculated MW	59583
Antigen Region	120-147

**PLXDC2 Antibody (N-term) - Additional Information**

**Gene ID** 84898

**Other Names**

Plexin domain-containing protein 2, Tumor endothelial marker 7-related protein, PLXDC2, TEM7R

**Target/Specificity**

This PLXDC2 antibody is generated from rabbits immunized with a KLH conjugated synthetic peptide between 120-147 amino acids from the N-terminal region of human PLXDC2.

**Dilution**

WB~~1:1000

**Format**

Purified polyclonal antibody supplied in PBS with 0.09% (W/V) sodium azide. This antibody is purified through a protein A column, followed by peptide affinity purification.

**Storage**

Maintain refrigerated at 2-8°C for up to 2 weeks. For long term storage store at -20°C in small aliquots to prevent freeze-thaw cycles.

**Precautions**

PLXDC2 Antibody (N-term) is for research use only and not for use in diagnostic or therapeutic procedures.

**PLXDC2 Antibody (N-term) - Protein Information**

**Name** PLXDC2

**Synonyms** TEM7R

**Function** May play a role in tumor angiogenesis.

**Cellular Location**

Membrane; Single-pass type I membrane protein

**Tissue Location**

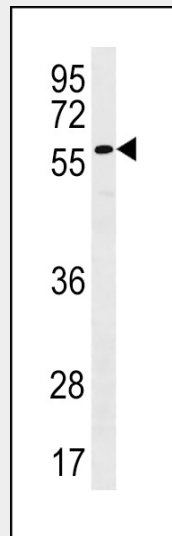
Expressed in the endothelial cells of the stroma but not in the endothelial cells of normal colonic tissue

**PLXDC2 Antibody (N-term) - Protocols**

Provided below are standard protocols that you may find useful for product applications.

- [Western Blot](#)
- [Blocking Peptides](#)
- [Dot Blot](#)
- [Immunohistochemistry](#)
- [Immunofluorescence](#)
- [Immunoprecipitation](#)
- [Flow Cytometry](#)
- [Cell Culture](#)

**PLXDC2 Antibody (N-term) - Images**



PLXDC2 Antibody (N-term) (Cat. #AP20309a) western blot analysis in NCI-H292 cell line lysates (35ug/lane). This demonstrates the PLXDC2 antibody detected the PLXDC2 protein (arrow).

**PLXDC2 Antibody (N-term) - Background**

May play a role in tumor angiogenesis.