

**DCLK1 Antibody (C-term)**  
**Affinity Purified Rabbit Polyclonal Antibody (Pab)**  
**Catalog # AP20304b**

**Specification**

---

**DCLK1 Antibody (C-term) - Product Information**

Application	WB,E
Primary Accession	<a href="#">O15075</a>
Other Accession	<a href="#">O9JLM8</a>
Reactivity	Human
Predicted	Mouse
Host	Rabbit
Clonality	Polyclonal
Isotype	Rabbit IgG
Antigen Region	685-712

**DCLK1 Antibody (C-term) - Additional Information**

**Gene ID** 9201

**Other Names**

Serine/threonine-protein kinase DCLK1, Doublecortin domain-containing protein 3A, Doublecortin-like and CAM kinase-like 1, Doublecortin-like kinase 1, DCLK1, DCAMKL1, DCDC3A, KIAA0369

**Target/Specificity**

This DCLK1 antibody is generated from rabbits immunized with a KLH conjugated synthetic peptide between 685-712 amino acids of human DCLK1.

**Dilution**

WB~~1:1000

**Format**

Purified polyclonal antibody supplied in PBS with 0.09% (W/V) sodium azide. This antibody is purified through a protein A column, followed by peptide affinity purification.

**Storage**

Maintain refrigerated at 2-8°C for up to 2 weeks. For long term storage store at -20°C in small aliquots to prevent freeze-thaw cycles.

**Precautions**

DCLK1 Antibody (C-term) is for research use only and not for use in diagnostic or therapeutic procedures.

**DCLK1 Antibody (C-term) - Protein Information**

**Name** DCLK1

**Synonyms** DCAMKL1, DCDC3A, KIAA0369

**Function** Probable kinase that may be involved in a calcium-signaling pathway controlling neuronal migration in the developing brain. May also participate in functions of the mature nervous system.

**Tissue Location**

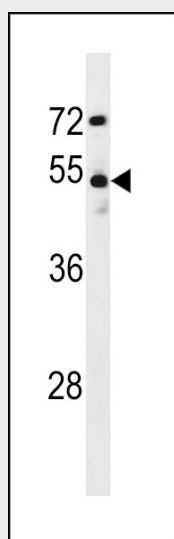
In fetal tissues, highly expressed in brain, detectable in lung and liver, but not in kidney. In adult tissues, expressed ubiquitously in the brain, detectable in the heart, liver, spleen, thymus, prostate, testis, ovary, small intestine and colon. The type A isoforms seem to be expressed predominantly in fetal brain whereas type B isoforms are expressed abundantly in both fetal and adult brain.

**DCLK1 Antibody (C-term) - Protocols**

Provided below are standard protocols that you may find useful for product applications.

- [Western Blot](#)
- [Blocking Peptides](#)
- [Dot Blot](#)
- [Immunohistochemistry](#)
- [Immunofluorescence](#)
- [Immunoprecipitation](#)
- [Flow Cytometry](#)
- [Cell Culture](#)

**DCLK1 Antibody (C-term) - Images**



DCLK1 Antibody (C-term) (Cat. #AP20304b) western blot analysis in MDA-MB231 cell line lysates (35ug/lane). This demonstrates the DCLK1 antibody detected the DCLK1 protein (arrow).

**DCLK1 Antibody (C-term) - Background**

Probable kinase that may be involved in a calcium-signaling pathway controlling neuronal migration in the developing brain. May also participate in functions of the mature nervous system.