

**Mouse Plau Antibody (C-term)**  
**Affinity Purified Rabbit Polyclonal Antibody (Pab)**  
**Catalog # AP20302b**

**Specification**

---

**Mouse Plau Antibody (C-term) - Product Information**

Application	WB,E
Primary Accession	<a href="#">P06869</a>
Reactivity	Human, Mouse
Host	Rabbit
Clonality	Polyclonal
Isotype	Rabbit IgG
Calculated MW	48268
Antigen Region	304-331

**Mouse Plau Antibody (C-term) - Additional Information**

**Gene ID** 18792

**Other Names**

Urokinase-type plasminogen activator, U-plasminogen activator, uPA, Urokinase-type plasminogen activator long chain A, Urokinase-type plasminogen activator short chain A, Urokinase-type plasminogen activator chain B, Plau

**Target/Specificity**

This Mouse Plau antibody is generated from rabbits immunized with a KLH conjugated synthetic peptide between 304-331 amino acids from the C-terminal region of mouse Plau.

**Dilution**

WB~~1:1000

**Format**

Purified polyclonal antibody supplied in PBS with 0.09% (W/V) sodium azide. This antibody is purified through a protein A column, followed by peptide affinity purification.

**Storage**

Maintain refrigerated at 2-8°C for up to 2 weeks. For long term storage store at -20°C in small aliquots to prevent freeze-thaw cycles.

**Precautions**

Mouse Plau Antibody (C-term) is for research use only and not for use in diagnostic or therapeutic procedures.

**Mouse Plau Antibody (C-term) - Protein Information**

**Name** Plau

**Function** Specifically cleaves the zymogen plasminogen to form the active enzyme plasmin.

### Cellular Location

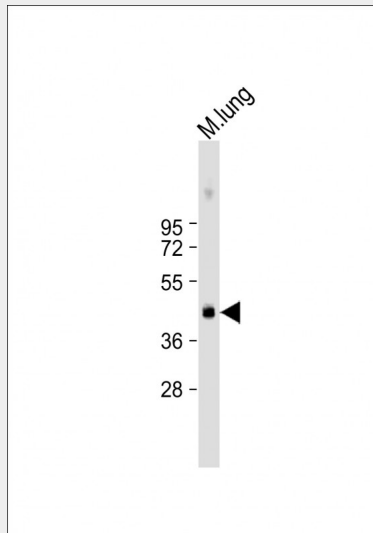
Secreted {ECO:0000250|UniProtKB:P00749}.

### Mouse Plau Antibody (C-term) - Protocols

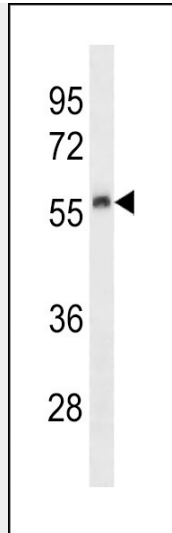
Provided below are standard protocols that you may find useful for product applications.

- [Western Blot](#)
- [Blocking Peptides](#)
- [Dot Blot](#)
- [Immunohistochemistry](#)
- [Immunofluorescence](#)
- [Immunoprecipitation](#)
- [Flow Cytometry](#)
- [Cell Culture](#)

### Mouse Plau Antibody (C-term) - Images



Anti-Mouse Plau Antibody (C-term) at 1:1000 dilution + mouse lung lysate Lysates/proteins at 20  $\mu$ g per lane. Secondary Goat Anti-Rabbit IgG, (H+L), Peroxidase conjugated at 1/10000 dilution. Predicted band size : 48 kDa Blocking/Dilution buffer: 5% NFDN/TBST.



Mouse Plau Antibody (C-term) (Cat. #AP20302b) western blot analysis in human placenta tissue lysates (35ug/lane). This demonstrates the Mouse Plau antibody detected the Mouse Plau protein (arrow).

#### **Mouse Plau Antibody (C-term) - Background**

Specifically cleave the zymogen plasminogen to form the active enzyme plasmin.