

**PLOD2 Antibody (C-term)**  
**Affinity Purified Rabbit Polyclonal Antibody (Pab)**  
**Catalog # AP20294b**

**Specification**

---

**PLOD2 Antibody (C-term) - Product Information**

Application	WB,E
Primary Accession	<a href="#">O00469</a>
Reactivity	Human
Host	Rabbit
Clonality	Polyclonal
Isotype	Rabbit IgG
Calculated MW	84686
Antigen Region	483-512

**PLOD2 Antibody (C-term) - Additional Information**

**Gene ID** 5352

**Other Names**

Procollagen-lysine, 2-oxoglutarate 5-dioxygenase 2, Lysyl hydroxylase 2, LH2, PLOD2

**Target/Specificity**

This PLOD2 antibody is generated from rabbits immunized with a KLH conjugated synthetic peptide between 483-512 amino acids from the C-terminal region of human PLOD2.

**Dilution**

WB~~1:1000

**Format**

Purified polyclonal antibody supplied in PBS with 0.09% (W/V) sodium azide. This antibody is purified through a protein A column, followed by peptide affinity purification.

**Storage**

Maintain refrigerated at 2-8°C for up to 2 weeks. For long term storage store at -20°C in small aliquots to prevent freeze-thaw cycles.

**Precautions**

PLOD2 Antibody (C-term) is for research use only and not for use in diagnostic or therapeutic procedures.

**PLOD2 Antibody (C-term) - Protein Information**

**Name** PLOD2 ([HGNC:9082](#))

**Function** Forms hydroxylysine residues in -Xaa-Lys-Gly- sequences in collagens. These hydroxylysines serve as sites of attachment for carbohydrate units and are essential for the stability of the intermolecular collagen cross-links.

**Cellular Location**

Rough endoplasmic reticulum membrane; Peripheral membrane protein; Luminal side

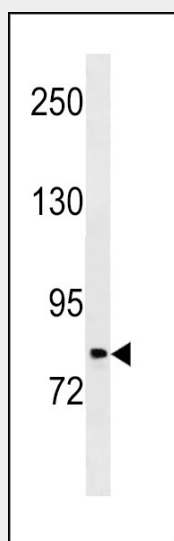
**Tissue Location**

Highly expressed in pancreas and muscle. Isoform 1 and isoform 2 are expressed in the majority of the examined cell types Isoform 2 is specifically expressed in skin, lung, dura and aorta

**PLOD2 Antibody (C-term) - Protocols**

Provided below are standard protocols that you may find useful for product applications.

- [Western Blot](#)
- [Blocking Peptides](#)
- [Dot Blot](#)
- [Immunohistochemistry](#)
- [Immunofluorescence](#)
- [Immunoprecipitation](#)
- [Flow Cytometry](#)
- [Cell Culture](#)

**PLOD2 Antibody (C-term) - Images**

PLOD2 Antibody (C-term) (Cat. #AP20294b) western blot analysis in HeLa cell line lysates (35ug/lane). This demonstrates the PLOD2 antibody detected the PLOD2 protein (arrow).

**PLOD2 Antibody (C-term) - Background**

Forms hydroxylysine residues in -Xaa-Lys-Gly-sequences in collagens. These hydroxylysines serve as sites of attachment for carbohydrate units and are essential for the stability of the intermolecular collagen cross-links.