

TMEM199 Antibody (N-term)
Affinity Purified Rabbit Polyclonal Antibody (Pab)
Catalog # AP20289a

Specification

TMEM199 Antibody (N-term) - Product Information

Application	WB,E
Primary Accession	Q8N511
Reactivity	Human
Host	Rabbit
Clonality	Polyclonal
Isotype	Rabbit IgG
Calculated MW	23130
Antigen Region	46-75

TMEM199 Antibody (N-term) - Additional Information

Gene ID 147007

Other Names

Transmembrane protein 199, TMEM199, C17orf32

Target/Specificity

This TMEM199 antibody is generated from rabbits immunized with a KLH conjugated synthetic peptide between 46-75 amino acids from the N-terminal region of human TMEM199.

Dilution

WB~~1:1000

Format

Purified polyclonal antibody supplied in PBS with 0.09% (W/V) sodium azide. This antibody is purified through a protein A column, followed by peptide affinity purification.

Storage

Maintain refrigerated at 2-8°C for up to 2 weeks. For long term storage store at -20°C in small aliquots to prevent freeze-thaw cycles.

Precautions

TMEM199 Antibody (N-term) is for research use only and not for use in diagnostic or therapeutic procedures.

TMEM199 Antibody (N-term) - Protein Information

Name TMEM199 {ECO:0000303|PubMed:26833330, ECO:0000312|HGNC:HGNC:18085}

Function Accessory component of the proton-transporting vacuolar (V)- ATPase protein pump involved in intracellular iron homeostasis. In aerobic conditions, required for intracellular iron homeostasis, thus triggering the activity of Fe(2+) prolyl hydroxylase (PHD) enzymes, and leading

to HIF1A hydroxylation and subsequent proteasomal degradation. Necessary for endolysosomal acidification and lysosomal degradation (PubMed:[28296633](#)). May be involved in Golgi homeostasis (PubMed:[26833330](#)). Binds 20(S)-hydroxycholesterol (20(S)-OHC) (By similarity).

Cellular Location

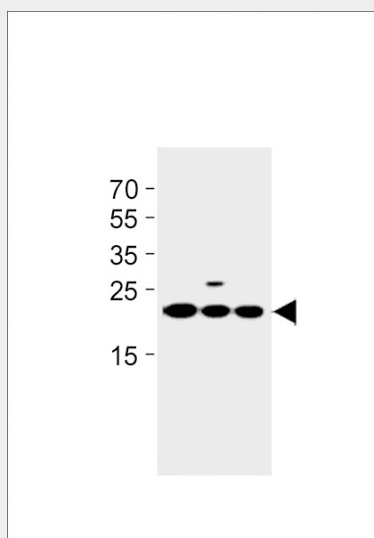
Cytoplasmic vesicle, COPI-coated vesicle membrane; Multi-pass membrane protein. Endoplasmic reticulum-Golgi intermediate compartment membrane; Multi-pass membrane protein. Endoplasmic reticulum membrane; Multi-pass membrane protein. Note=Partial colocalization with GOLGB1

TMEM199 Antibody (N-term) - Protocols

Provided below are standard protocols that you may find useful for product applications.

- [Western Blot](#)
- [Blocking Peptides](#)
- [Dot Blot](#)
- [Immunohistochemistry](#)
- [Immunofluorescence](#)
- [Immunoprecipitation](#)
- [Flow Cytometry](#)
- [Cell Culture](#)

TMEM199 Antibody (N-term) - Images



TMEM199 Antibody (N-term) (Cat. #AP20289a) western blot analysis in A549, 293, U251 cell line lysates (35ug/lane). This demonstrates the TMEM199 antibody detected the TMEM199 protein (arrow).

TMEM199 Antibody (N-term) - Background

The function of this protein remains unknown.