

ACSL1 Antibody (C-term)
Affinity Purified Rabbit Polyclonal Antibody (Pab)
Catalog # AP20275B

Specification

ACSL1 Antibody (C-term) - Product Information

Application	WB,E
Primary Accession	P33121
Other Accession	NP_001986.2
Reactivity	Human
Host	Rabbit
Clonality	Polyclonal
Isotype	Rabbit IgG
Calculated MW	77943
Antigen Region	505-533

ACSL1 Antibody (C-term) - Additional Information

Gene ID 2180

Other Names

Long-chain-fatty-acid--CoA ligase 1, Acyl-CoA synthetase 1, ACS1, Long-chain acyl-CoA synthetase 1, LACS 1, Long-chain acyl-CoA synthetase 2, LACS 2, Long-chain fatty acid-CoA ligase 2, Palmitoyl-CoA ligase 1, Palmitoyl-CoA ligase 2, ACSL1, FACL1, FACL2, LACS, LACS1, LACS2

Target/Specificity

This ACSL1 antibody is generated from rabbits immunized with a KLH conjugated synthetic peptide between 505-533 amino acids from the C-terminal region of human ACSL1.

Dilution

WB~~1:1000

Format

Purified polyclonal antibody supplied in PBS with 0.09% (W/V) sodium azide. This antibody is purified through a protein A column, followed by peptide affinity purification.

Storage

Maintain refrigerated at 2-8°C for up to 2 weeks. For long term storage store at -20°C in small aliquots to prevent freeze-thaw cycles.

Precautions

ACSL1 Antibody (C-term) is for research use only and not for use in diagnostic or therapeutic procedures.

ACSL1 Antibody (C-term) - Protein Information

Name ACSL1 ([HGNC:3569](#))

Function Catalyzes the conversion of long-chain fatty acids to their active form acyl-CoAs for both synthesis of cellular lipids, and degradation via beta-oxidation (PubMed:[21242590](#), PubMed:[22633490](#), PubMed:[24269233](#)). Preferentially uses palmitoleate, oleate and linoleate (PubMed:[24269233](#)). Preferentially activates arachidonate than epoxyeicosatrienoic acids (EETs) or hydroxyeicosatrienoic acids (HETEs) (By similarity).

Cellular Location

Mitochondrion outer membrane; Single-pass type III membrane protein. Peroxisome membrane; Single-pass type III membrane protein. Microsome membrane; Single-pass type III membrane protein. Endoplasmic reticulum membrane; Single-pass type III membrane protein

Tissue Location

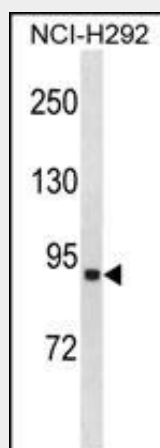
Highly expressed in liver, heart, skeletal muscle, kidney and erythroid cells, and to a lesser extent in brain, lung, placenta and pancreas.

ACSL1 Antibody (C-term) - Protocols

Provided below are standard protocols that you may find useful for product applications.

- [Western Blot](#)
- [Blocking Peptides](#)
- [Dot Blot](#)
- [Immunohistochemistry](#)
- [Immunofluorescence](#)
- [Immunoprecipitation](#)
- [Flow Cytometry](#)
- [Cell Culture](#)

ACSL1 Antibody (C-term) - Images



ACSL1 Antibody (C-term) (Cat. #AP20275b) western blot analysis in NCI-H292 cell line lysates (35ug/lane). This demonstrates the ACSL1 antibody detected the ACSL1 protein (arrow).

ACSL1 Antibody (C-term) - Background

The protein encoded by this gene is an isozyme of the long-chain fatty-acid-coenzyme A ligase family. Although differing in substrate specificity, subcellular localization, and tissue distribution, all isozymes of this family convert free long-chain fatty acids into fatty acyl-CoA esters, and thereby play a key role

in lipid biosynthesis and fatty acid degradation. [provided by RefSeq].

ACSL1 Antibody (C-term) - References

- Phillips, C.M., et al. J. Lipid Res. 51(7):1793-1800(2010)
Lu, Y., et al. J. Lipid Res. 49(12):2582-2589(2008)
Soupene, E., et al. BMC Mol. Biol. 7, 21 (2006) :
Kahn, B.B., et al. Cell Metab. 1(1):15-25(2005)
Mashek, D.G., et al. J. Lipid Res. 45(10):1958-1961(2004)