

RBCK1 Antibody (N-term)
Affinity Purified Rabbit Polyclonal Antibody (Pab)
Catalog # AP20236a

Specification

RBCK1 Antibody (N-term) - Product Information

Application	WB,E
Primary Accession	O9BYM8
Other Accession	NP_112506.2
Reactivity	Human
Host	Rabbit
Clonality	Polyclonal
Isotype	Rabbit IgG
Calculated MW	57572
Antigen Region	1-30

RBCK1 Antibody (N-term) - Additional Information

Gene ID 10616

Other Names

RanBP-type and C3HC4-type zinc finger-containing protein 1, 632-, HBV-associated factor 4, Heme-oxidized IRP2 ubiquitin ligase 1, HOIL-1, Hepatitis B virus X-associated protein 4, RING finger protein 54, Ubiquitin-conjugating enzyme 7-interacting protein 3, RBCK1, C20orf18, RNF54, UBCE7IP3, XAP3, XAP4

Target/Specificity

This RBCK1 antibody is generated from rabbits immunized with a KLH conjugated synthetic peptide between 1-30 amino acids from the N-terminal region of human RBCK1.

Dilution

WB~~1:1000

Format

Purified polyclonal antibody supplied in PBS with 0.09% (W/V) sodium azide. This antibody is purified through a protein A column, followed by peptide affinity purification.

Storage

Maintain refrigerated at 2-8°C for up to 2 weeks. For long term storage store at -20°C in small aliquots to prevent freeze-thaw cycles.

Precautions

RBCK1 Antibody (N-term) is for research use only and not for use in diagnostic or therapeutic procedures.

RBCK1 Antibody (N-term) - Protein Information

Name RBCK1

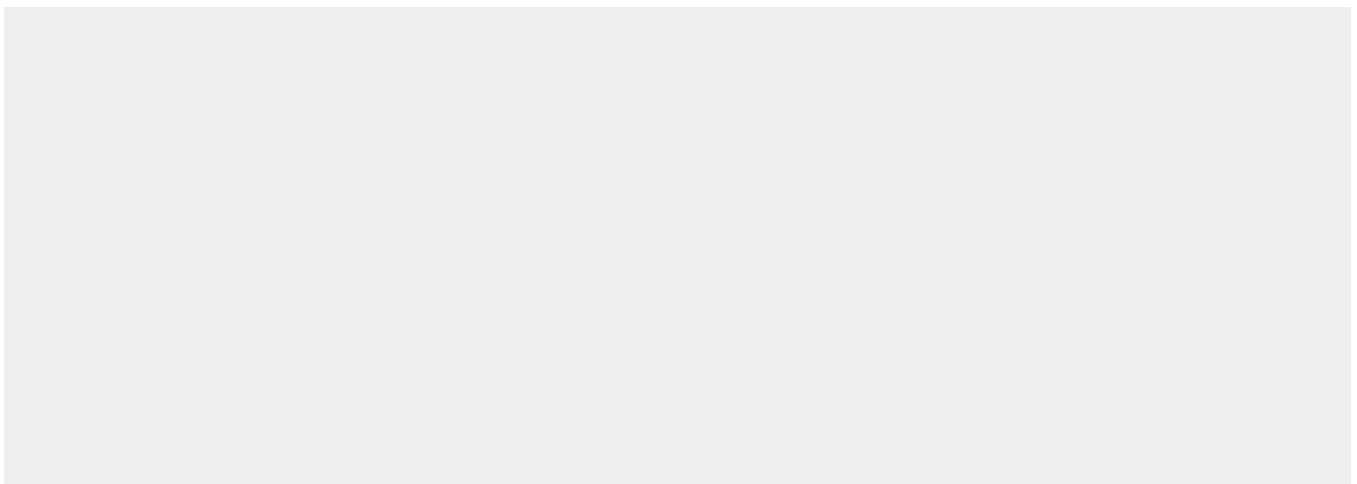
Function E3 ubiquitin-protein ligase, which accepts ubiquitin from specific E2 ubiquitin-conjugating enzymes, such as UBE2L3/UBCM4, and then transfers it to substrates (PubMed:[12629548](#), PubMed:[17449468](#), PubMed:[18711448](#)). Functions as an E3 ligase for oxidized IREB2 and both heme and oxygen are necessary for IREB2 ubiquitination (PubMed:[12629548](#)). Promotes ubiquitination of TAB2 and IRF3 and their degradation by the proteasome (PubMed:[17449468](#), PubMed:[18711448](#)). Component of the LUBAC complex which conjugates linear ('Met-1'-linked) polyubiquitin chains to substrates and plays a key role in NF-kappa-B activation and regulation of inflammation (PubMed:[17006537](#), PubMed:[19136968](#), PubMed:[21455173](#), PubMed:[21455180](#), PubMed:[21455181](#)). LUBAC conjugates linear polyubiquitin to IKBKG and RIPK1 and is involved in activation of the canonical NF-kappa-B and the JNK signaling pathways (PubMed:[17006537](#), PubMed:[19136968](#), PubMed:[21455173](#), PubMed:[21455180](#), PubMed:[21455181](#)). Linear ubiquitination mediated by the LUBAC complex interferes with TNF-induced cell death and thereby prevents inflammation (PubMed:[17006537](#), PubMed:[21455173](#), PubMed:[21455180](#), PubMed:[21455181](#)). LUBAC is recruited to the TNF-R1 signaling complex (TNF-RSC) following polyubiquitination of TNF-RSC components by BIRC2 and/or BIRC3 and to conjugate linear polyubiquitin to IKBKG and possibly other components contributing to the stability of the complex (PubMed:[17006537](#), PubMed:[19136968](#), PubMed:[21455173](#), PubMed:[21455180](#), PubMed:[21455181](#)). The LUBAC complex is also involved in innate immunity by conjugating linear polyubiquitin chains at the surface of bacteria invading the cytosol to form the ubiquitin coat surrounding bacteria (PubMed:[28481331](#)). LUBAC is not able to initiate formation of the bacterial ubiquitin coat, and can only promote formation of linear polyubiquitins on pre-existing ubiquitin (PubMed:[28481331](#)). The bacterial ubiquitin coat acts as an 'eat-me' signal for xenophagy and promotes NF-kappa-B activation (PubMed:[28481331](#)). Together with OTULIN, the LUBAC complex regulates the canonical Wnt signaling during angiogenesis (PubMed:[23708998](#)). Binds polyubiquitin of different linkage types (PubMed:[20005846](#), PubMed:[21455181](#)).

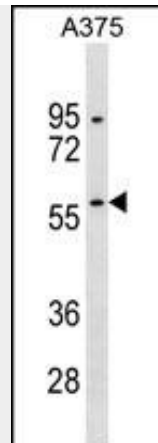
RBCK1 Antibody (N-term) - Protocols

Provided below are standard protocols that you may find useful for product applications.

- [Western Blot](#)
- [Blocking Peptides](#)
- [Dot Blot](#)
- [Immunohistochemistry](#)
- [Immunofluorescence](#)
- [Immunoprecipitation](#)
- [Flow Cytometry](#)
- [Cell Culture](#)

RBCK1 Antibody (N-term) - Images





RBCK1 Antibody (N-term) (Cat. #AP20236a) western blot analysis in A375 cell line lysates (35ug/lane). This demonstrates the RBCK1 antibody detected the RBCK1 protein (arrow).

RBCK1 Antibody (N-term) - Background

The protein encoded by this gene is similar to mouse UIP28/UbcM4 interacting protein. Alternative splicing has been observed at this locus, resulting in distinct isoforms. [provided by RefSeq].

RBCK1 Antibody (N-term) - References

Gustafsson, N., et al. *Cancer Res.* 70(3):1265-1274(2010)
Yoshimoto, N., et al. *FEBS J.* 276(21):6375-6385(2009)
Tokunaga, F., et al. *Nat. Cell Biol.* 11(2):123-132(2009)
Mullenders, J., et al. *PLoS ONE* 4 (3), E4798 (2009) :
Zhang, M., et al. *Cell Res.* 18(11):1096-1104(2008)