

ATOH1 Antibody (C-term)
Affinity Purified Rabbit Polyclonal Antibody (Pab)
Catalog # AP20212b

Specification

ATOH1 Antibody (C-term) - Product Information

Application	WB,E
Primary Accession	O92858
Other Accession	NP_005163.1
Reactivity	Human
Host	Rabbit
Clonality	Polyclonal
Isotype	Rabbit IgG
Calculated MW	38160
Antigen Region	310-338

ATOH1 Antibody (C-term) - Additional Information

Gene ID 474

Other Names

Protein atonal homolog 1, Class A basic helix-loop-helix protein 14, bHLHa14, Helix-loop-helix protein hATH-1, hATH1, ATOH1, ATH1, BHLHA14

Target/Specificity

This ATOH1 antibody is generated from rabbits immunized with a KLH conjugated synthetic peptide between 310-338 amino acids from the C-terminal region of human ATOH1.

Dilution

WB~~1:1000

Format

Purified polyclonal antibody supplied in PBS with 0.09% (W/V) sodium azide. This antibody is purified through a protein A column, followed by peptide affinity purification.

Storage

Maintain refrigerated at 2-8°C for up to 2 weeks. For long term storage store at -20°C in small aliquots to prevent freeze-thaw cycles.

Precautions

ATOH1 Antibody (C-term) is for research use only and not for use in diagnostic or therapeutic procedures.

ATOH1 Antibody (C-term) - Protein Information

Name ATOH1 ([HGNC:797](#))

Synonyms ATH1, BHLHA14

Function Transcriptional regulator. Activates E box-dependent transcription in collaboration with TCF3/E47, but the activity is completely antagonized by the negative regulator of neurogenesis HES1. Plays a role in the differentiation of subsets of neural cells by activating E box-dependent transcription (By similarity).

Cellular Location

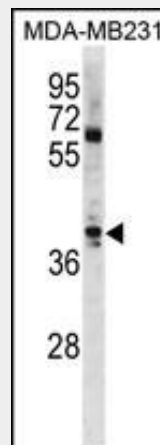
Nucleus.

ATOH1 Antibody (C-term) - Protocols

Provided below are standard protocols that you may find useful for product applications.

- [Western Blot](#)
- [Blocking Peptides](#)
- [Dot Blot](#)
- [Immunohistochemistry](#)
- [Immunofluorescence](#)
- [Immunoprecipitation](#)
- [Flow Cytometry](#)
- [Cell Culture](#)

ATOH1 Antibody (C-term) - Images



ATOH1 Antibody (C-term) (Cat. #AP20212b) western blot analysis in MDA-MB231 cell line lysates (35ug/lane). This demonstrates the ATOH1 antibody detected the ATOH1 protein (arrow).

ATOH1 Antibody (C-term) - Background

This protein belongs to the basic helix-loop-helix (BHLH) family of transcription factors. It activates E-box dependent transcription along with E47.

ATOH1 Antibody (C-term) - References

- Kazanjian, A., et al. *Gastroenterology* 139(3):918-928(2010)
Heiskala, K., et al. *Histol. Histopathol.* 25(1):63-72(2010)
Maricich, S.M., et al. *J. Neurosci.* 29(36):11123-11133(2009)
Bossuyt, W., et al. *PLoS Biol.* 7 (2), E39 (2009) :
Aragaki, M., et al. *Biochem. Biophys. Res. Commun.* 368(4):923-929(2008)