

FUNDC2 Antibody (C-term)
Affinity Purified Rabbit Polyclonal Antibody (Pab)
Catalog # AP20155b

Specification

FUNDC2 Antibody (C-term) - Product Information

Application	WB,E
Primary Accession	O9BWH2
Other Accession	O864V5 , O9D6K8 , O8MJN0 , NP_076423.2
Reactivity	Human, Mouse
Predicted	Bovine, Pig
Host	Rabbit
Clonality	Polyclonal
Isotype	Rabbit IgG
Antigen Region	122-150

FUNDC2 Antibody (C-term) - Additional Information

Gene ID 65991

Other Names

FUN14 domain-containing protein 2, Cervical cancer proto-oncogene 3 protein, HCC-3, Hepatitis C virus core-binding protein 6, FUNDC2, HCBP6

Target/Specificity

This FUNDC2 antibody is generated from rabbits immunized with a KLH conjugated synthetic peptide between 122-150 amino acids from the C-terminal region of human FUNDC2.

Dilution

WB~~1:500-1:1000

Format

Purified polyclonal antibody supplied in PBS with 0.09% (W/V) sodium azide. This antibody is purified through a protein A column, followed by peptide affinity purification.

Storage

Maintain refrigerated at 2-8°C for up to 2 weeks. For long term storage store at -20°C in small aliquots to prevent freeze-thaw cycles.

Precautions

FUNDC2 Antibody (C-term) is for research use only and not for use in diagnostic or therapeutic procedures.

FUNDC2 Antibody (C-term) - Protein Information

Name FUNDC2 ([HGNC:24925](#))

Synonyms HCBP6

Function Binds directly and specifically 1,2-Diacyl-sn-glycero-3-phospho-(1'-myo-inositol-3',4',5'-bisphosphate) (PIP3) leading to the recruitment of PIP3 to mitochondria and may play a role in the regulation of the platelet activation via AKT/GSK3B/cGMP signaling pathways (PubMed:[29786068](#)). May act as transcription factor that regulates SREBP1 (isoform SREBP-1C) expression in order to modulate triglyceride (TG) homeostasis in hepatocytes (PubMed:[25855506](#), PubMed:[29187281](#)).

Cellular Location

Mitochondrion outer membrane; Multi-pass membrane protein. Nucleus

Tissue Location

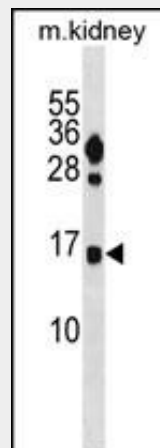
Highly expressed in platelets (at protein level).

FUNDC2 Antibody (C-term) - Protocols

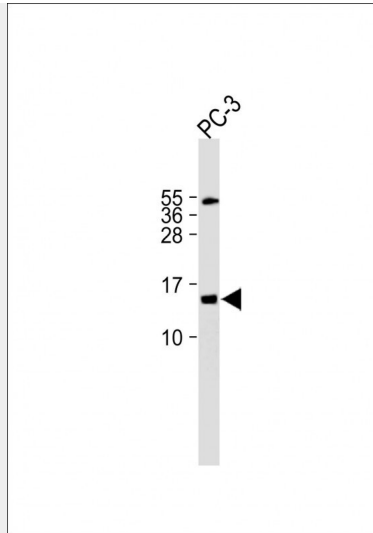
Provided below are standard protocols that you may find useful for product applications.

- [Western Blot](#)
- [Blocking Peptides](#)
- [Dot Blot](#)
- [Immunohistochemistry](#)
- [Immunofluorescence](#)
- [Immunoprecipitation](#)
- [Flow Cytometry](#)
- [Cell Culture](#)

FUNDC2 Antibody (C-term) - Images



FUNDC2 Antibody (C-term) (Cat. #AP20155b) western blot analysis in mouse kidney tissue lysates (35ug/lane). This demonstrates the FUNDC2 antibody detected the FUNDC2 protein (arrow).



All lanes : Anti-FUNDC2 Antibody (C-term) at 1:500 dilution Lane 1: PC-3 whole cell lysate
Lysates/proteins at 20 µg per lane. Secondary Goat Anti-Rabbit IgG, (H+L), Peroxidase conjugated
(ASP1615) at 1/15000 dilution. Observed band size : 15kDa Blocking/Dilution buffer: 5%
NFDM/TBST.

FUNDC2 Antibody (C-term) - Background

The function of this protein is unknown.

FUNDC2 Antibody (C-term) - References

- Olsen, J.V., et al. Cell 127(3):635-648(2006)
- Li, K., et al. Zhonghua Shi Yan He Lin Chuang Bing Du Xue Za Zhi 16(4):351-353(2002)
- Simpson, J.C., et al. EMBO Rep. 1(3):287-292(2000)