

**VANGL2 Antibody (N-term)**  
**Affinity Purified Rabbit Polyclonal Antibody (Pab)**  
**Catalog # AP20148a**

**Specification**

---

**VANGL2 Antibody (N-term) - Product Information**

Application	WB,E
Primary Accession	<a href="#">O9ULK5</a>
Other Accession	<a href="#">P84889</a> , <a href="#">O91ZD4</a> , <a href="#">NP_065068.1</a>
Reactivity	Mouse
Predicted	Rat
Host	Rabbit
Clonality	Polyclonal
Isotype	Rabbit IgG
Calculated MW	59714
Antigen Region	37-65

**VANGL2 Antibody (N-term) - Additional Information**

**Gene ID** 57216

**Other Names**

Vang-like protein 2, Loop-tail protein 1 homolog, Strabismus 1, Van Gogh-like protein 2, VANGL2, KIAA1215, STB1

**Target/Specificity**

This VANGL2 antibody is generated from rabbits immunized with a KLH conjugated synthetic peptide between 37-65 amino acids from the N-terminal region of human VANGL2.

**Dilution**

WB~~1:1000

**Format**

Purified polyclonal antibody supplied in PBS with 0.09% (W/V) sodium azide. This antibody is purified through a protein A column, followed by peptide affinity purification.

**Storage**

Maintain refrigerated at 2-8°C for up to 2 weeks. For long term storage store at -20°C in small aliquots to prevent freeze-thaw cycles.

**Precautions**

VANGL2 Antibody (N-term) is for research use only and not for use in diagnostic or therapeutic procedures.

**VANGL2 Antibody (N-term) - Protein Information**

**Name** VANGL2

### Synonyms KIAA1215, STB1

**Function** Involved in the control of early morphogenesis and patterning of both axial midline structures and the development of neural plate. Plays a role in the regulation of planar cell polarity, particularly in the orientation of stereociliary bundles in the cochlea. Required for polarization and movement of myocardializing cells in the outflow tract and seems to act via RHOA signaling to regulate this process. Required for cell surface localization of FZD3 and FZD6 in the inner ear (By similarity).

### Cellular Location

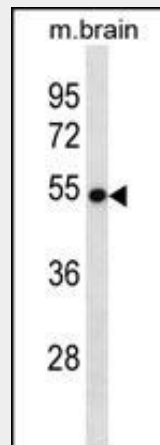
Cell membrane; Multi-pass membrane protein

### VANGL2 Antibody (N-term) - Protocols

Provided below are standard protocols that you may find useful for product applications.

- [Western Blot](#)
- [Blocking Peptides](#)
- [Dot Blot](#)
- [Immunohistochemistry](#)
- [Immunofluorescence](#)
- [Immunoprecipitation](#)
- [Flow Cytometry](#)
- [Cell Culture](#)

### VANGL2 Antibody (N-term) - Images



VANGL2 Antibody (N-term) (Cat. #AP20148a) western blot analysis in mouse brain tissue lysates (35ug/lane). This demonstrates the VANGL2 antibody detected the VANGL2 protein (arrow).

### VANGL2 Antibody (N-term) - Background

Planar cell polarity (PCP) is the term given to global cell polarization, such as the alignment of mammalian body hair along the anterior-posterior axis or the orientation of stereocilia bundles in the inner ear. VANGL2 is a PCP protein that is involved in the transmission of directional cues to align either individual cells within an epithelial sheet or multicellular clusters, which polarize as a group (Devenport and Fuchs, 2008 [PubMed 18849982]).

**VANGL2 Antibody (N-term) - References**

- Lei, Y.P., et al. N. Engl. J. Med. 362(23):2232-2235(2010)  
Yates, L.L., et al. Hum. Mol. Genet. 19(11):2251-2267(2010)  
Cantrell, V.A., et al. Cancer Lett. 287(1):54-61(2010)  
Need, A.C., et al. Hum. Mol. Genet. 18(23):4650-4661(2009)  
Devenport, D., et al. Nat. Cell Biol. 10(11):1257-1268(2008)