

**SH3BGRL Antibody (Center)**  
**Affinity Purified Rabbit Polyclonal Antibody (Pab)**  
**Catalog # AP20144c**

**Specification**

---

**SH3BGRL Antibody (Center) - Product Information**

Application	WB,E
Primary Accession	<a href="#">O75368</a>
Other Accession	<a href="#">O4R7R5</a> , <a href="#">O58DU7</a> , <a href="#">NP_003013.1</a>
Reactivity	Human
Predicted	Bovine, Monkey
Host	Rabbit
Clonality	Polyclonal
Isotype	Rabbit IgG
Calculated MW	12774
Antigen Region	35-63

**SH3BGRL Antibody (Center) - Additional Information**

**Gene ID** 6451

**Other Names**

SH3 domain-binding glutamic acid-rich-like protein, SH3BGRL

**Target/Specificity**

This SH3BGRL antibody is generated from rabbits immunized with a KLH conjugated synthetic peptide between 35-63 amino acids from the Central region of human SH3BGRL.

**Dilution**

WB~~1:1000

**Format**

Purified polyclonal antibody supplied in PBS with 0.09% (W/V) sodium azide. This antibody is purified through a protein A column, followed by peptide affinity purification.

**Storage**

Maintain refrigerated at 2-8°C for up to 2 weeks. For long term storage store at -20°C in small aliquots to prevent freeze-thaw cycles.

**Precautions**

SH3BGRL Antibody (Center) is for research use only and not for use in diagnostic or therapeutic procedures.

**SH3BGRL Antibody (Center) - Protein Information**

**Name** SH3BGRL {ECO:0000303|PubMed:9642120}

**Function** Appears to function as an adapter protein that bridges proteins together or proteins with

mRNAs (PubMed:[34331014](#)). May function as a ubiquitin ligase-substrate adapter (PubMed:[34331014](#), PubMed:[34870550](#)). Additionally, associates with translating cytoplasmic ribosomes and may promote the expression of specific mRNAs (PubMed:[34331014](#), PubMed:[34870550](#)).

#### Cellular Location

Cytoplasm, cytosol. Cell membrane

#### Tissue Location

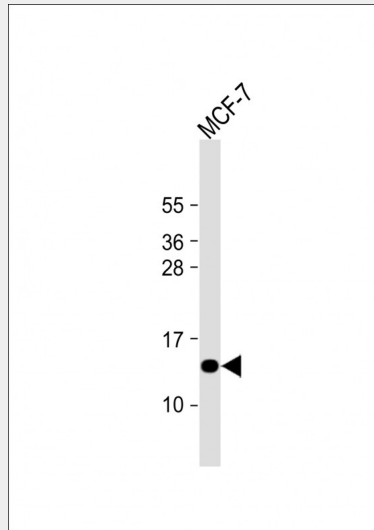
Ubiquitous..

### SH3BGRL Antibody (Center) - Protocols

Provided below are standard protocols that you may find useful for product applications.

- [Western Blot](#)
- [Blocking Peptides](#)
- [Dot Blot](#)
- [Immunohistochemistry](#)
- [Immunofluorescence](#)
- [Immunoprecipitation](#)
- [Flow Cytometry](#)
- [Cell Culture](#)

### SH3BGRL Antibody (Center) - Images



Anti-SH3BGRL Antibody (Center) at 1:1000 dilution + MCF-7 whole cell lysate Lysates/proteins at 20 µg per lane. Secondary Goat Anti-Rabbit IgG, (H+L), Peroxidase conjugated at 1/10000 dilution. Predicted band size : 13 kDa Blocking/Dilution buffer: 5% NFDM/TBST.

### SH3BGRL Antibody (Center) - Background

The function of this protein is unknown.

### SH3BGRL Antibody (Center) - References

Naukkarinen, J., et al. PLoS Genet. 6 (6), E1000976 (2010) :

Majid, S.M., et al. Oncogene 25(5):756-768(2006)  
Yin, L., et al. Proteins 61(1):213-216(2005)  
Bruneel, A., et al. Proteomics 5(15):3876-3884(2005)  
Ross, M.T., et al. Nature 434(7031):325-337(2005)