

**TFIP11 Antibody (N-term)**  
**Affinity Purified Rabbit Polyclonal Antibody (Pab)**  
**Catalog # AP20105a****Specification**

---

**TFIP11 Antibody (N-term) - Product Information**

Application	<b>WB, IHC-P,E</b>
Primary Accession	<a href="#">O9UBB9</a>
Other Accession	<a href="#">A1XD95</a> , <a href="#">NP_036275.1</a>
Reactivity	<b>Human</b>
Predicted	<b>Monkey</b>
Host	<b>Rabbit</b>
Clonality	<b>Polyclonal</b>
Isotype	<b>Rabbit IgG</b>
Calculated MW	<b>96820</b>
Antigen Region	<b>42-70</b>

**TFIP11 Antibody (N-term) - Additional Information****Gene ID** 24144**Other Names**

Tuftelin-interacting protein 11, Septin and tuftelin-interacting protein 1, STIP-1, TFIP11, STIP

**Target/Specificity**

This TFIP11 antibody is generated from rabbits immunized with a KLH conjugated synthetic peptide between 42-70 amino acids from the N-terminal region of human TFIP11.

**Dilution**

WB~~1:1000

IHC-P~~1:25

**Format**

Purified polyclonal antibody supplied in PBS with 0.09% (W/V) sodium azide. This antibody is purified through a protein A column, followed by peptide affinity purification.

**Storage**

Maintain refrigerated at 2-8°C for up to 2 weeks. For long term storage store at -20°C in small aliquots to prevent freeze-thaw cycles.

**Precautions**

TFIP11 Antibody (N-term) is for research use only and not for use in diagnostic or therapeutic procedures.

**TFIP11 Antibody (N-term) - Protein Information****Name** TFIP11

## Synonyms STIP

**Function** Involved in pre-mRNA splicing, specifically in spliceosome disassembly during late-stage splicing events. Intron turnover seems to proceed through reactions in two lariat-intron associated complexes termed Intron Large (IL) and Intron Small (IS). In cooperation with DHX15 seems to mediate the transition of the U2, U5 and U6 snRNP- containing IL complex to the snRNP-free IS complex leading to efficient debranching and turnover of excised introns. May play a role in the differentiation of ameloblasts and odontoblasts or in the forming of the enamel extracellular matrix.

## Cellular Location

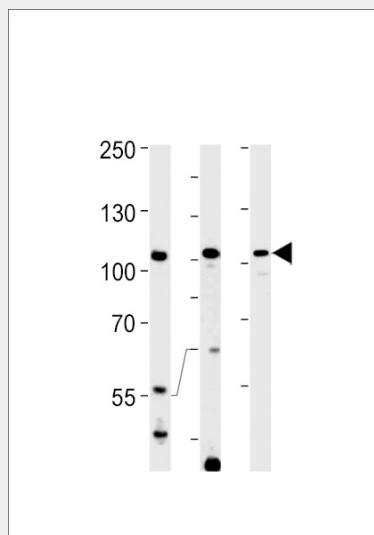
Cytoplasm. Nucleus. Note=In the nucleus localizes to unique speckle domains in close proximity to nuclear speckles and not identical to paraspeckles

## TFIP11 Antibody (N-term) - Protocols

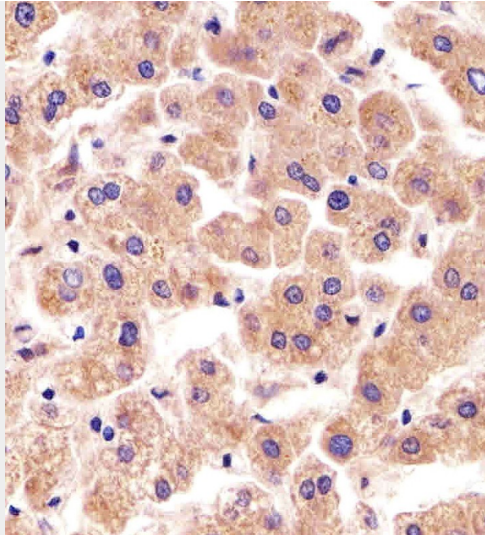
Provided below are standard protocols that you may find useful for product applications.

- [Western Blot](#)
- [Blocking Peptides](#)
- [Dot Blot](#)
- [Immunohistochemistry](#)
- [Immunofluorescence](#)
- [Immunoprecipitation](#)
- [Flow Cytometry](#)
- [Cell Culture](#)

## TFIP11 Antibody (N-term) - Images



TFIP11 Antibody (N-term) (Cat.# AP20105a) western blot analysis in HeLa K562 cell line and rat spleen tissue lysates (35ug/lane). This demonstrates the TFIP11 antibody detected the TFIP11 protein (arrow).



Immunohistochemical analysis of paraffin-embedded H. liver section using TFIP11 Antibody (N-term)(Cat#AP20105a). AP20105a was diluted at 1:25 dilution. A undiluted biotinylated goat polyvalent antibody was used as the secondary, followed by DAB staining.

#### **TFIP11 Antibody (N-term) - Background**

TFIP11 is a nuclear speckle-localized protein that may play a role in spliceosome disassembly in Cajal bodies (Stanek et al., 2008 [PubMed 18367544]).

#### **TFIP11 Antibody (N-term) - References**

Saus, E., et al. J Psychiatr Res (2010) In press :  
Tannukit, S., et al. Biochem. Biophys. Res. Commun. 390(3):1044-1050(2009)  
Gratacos, M., et al. Am. J. Med. Genet. B Neuropsychiatr. Genet. 150B (6), 808-816 (2009) :  
Stanek, D., et al. Mol. Biol. Cell 19(6):2534-2543(2008)  
Patir, A., et al. Caries Res. 42(5):394-400(2008)