

GDI1 Antibody (C-term)
Affinity Purified Rabbit Polyclonal Antibody (Pab)
Catalog # AP20083b

Specification

GDI1 Antibody (C-term) - Product Information

Application	WB,E
Primary Accession	P31150
Other Accession	P50398 , P50396 , Q8HXX7 , P21856 , NP_001484.1
Reactivity	Human, Mouse, Rat
Predicted	Bovine, Monkey
Host	Rabbit
Clonality	Polyclonal
Isotype	Rabbit IgG
Calculated MW	50583
Antigen Region	415-443

GDI1 Antibody (C-term) - Additional Information

Gene ID 2664

Other Names

Rab GDP dissociation inhibitor alpha, Rab GDI alpha, Guanosine diphosphate dissociation inhibitor 1, GDI-1, Oligophrenin-2, Protein XAP-4, GDI1, GDIL, OPHN2, RABGDIA, XAP4

Target/Specificity

This GDI1 antibody is generated from rabbits immunized with a KLH conjugated synthetic peptide between 415-443 amino acids from the C-terminal region of human GDI1.

Dilution

WB~~1:1000-1:2000

Format

Purified polyclonal antibody supplied in PBS with 0.09% (W/V) sodium azide. This antibody is purified through a protein A column, followed by peptide affinity purification.

Storage

Maintain refrigerated at 2-8°C for up to 2 weeks. For long term storage store at -20°C in small aliquots to prevent freeze-thaw cycles.

Precautions

GDI1 Antibody (C-term) is for research use only and not for use in diagnostic or therapeutic procedures.

GDI1 Antibody (C-term) - Protein Information

Name GDI1

Synonyms GDIL, OPHN2, RABGDIA, XAP4

Function Regulates the GDP/GTP exchange reaction of most Rab proteins by inhibiting the dissociation of GDP from them, and the subsequent binding of GTP to them. Promotes the dissociation of GDP-bound Rab proteins from the membrane and inhibits their activation. Promotes the dissociation of RAB1A, RAB3A, RAB5A and RAB10 from membranes.

Cellular Location

Cytoplasm. Golgi apparatus, trans-Golgi network

Tissue Location

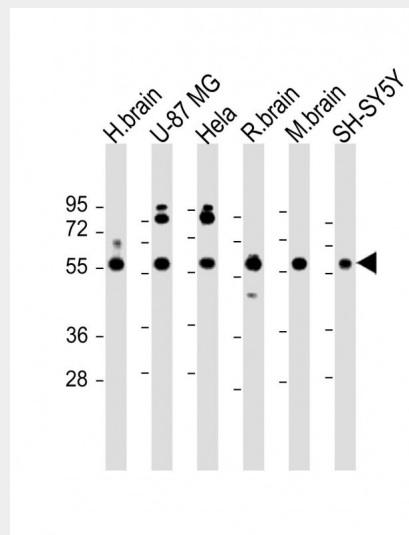
Brain; predominant in neural and sensory tissues.

GDI1 Antibody (C-term) - Protocols

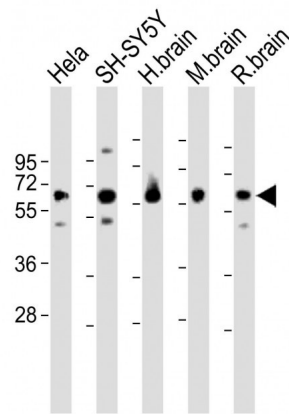
Provided below are standard protocols that you may find useful for product applications.

- [Western Blot](#)
- [Blocking Peptides](#)
- [Dot Blot](#)
- [Immunohistochemistry](#)
- [Immunofluorescence](#)
- [Immunoprecipitation](#)
- [Flow Cytometry](#)
- [Cell Culture](#)

GDI1 Antibody (C-term) - Images



All lanes : Anti-GDI1 Antibody (C-term) at 1:2000 dilution Lane 1: human brain lysate Lane 2: U-87 MG whole cell lysate Lane 3: HeLa whole cell lysate Lane 4: rat brain lysate Lane 5: mouse brain lysate Lane 6: SH-SY5Y whole cell lysate Lysates/proteins at 20 µg per lane. Secondary Goat Anti-Rabbit IgG, (H+L), Peroxidase conjugated at 1/10000 dilution. Predicted band size : 51 kDa Blocking/Dilution buffer: 5% NFDM/TBST.



All lanes : Anti-GDI1 Antibody (C-term) at 1:1000-1:2000 dilution Lane 1: HeLa whole cell lysate
Lane 2: SH-SY5Y whole cell lysate Lane 3: H. brain whole lysate Lane 4: M. brain whole lysate Lane 5: R. brain whole lysate Lysates/proteins at 20 µg per lane. Secondary Goat Anti-Rabbit IgG, (H+L), Peroxidase conjugated at 1/10000 dilution. Predicted band size : 51 kDa Blocking/Dilution buffer: 5% NFDN/TBST.

GDI1 Antibody (C-term) - Background

GDP dissociation inhibitors are proteins that regulate the GDP-GTP exchange reaction of members of the rab family, small GTP-binding proteins of the ras superfamily, that are involved in vesicular trafficking of molecules between cellular organelles. GDIs slow the rate of dissociation of GDP from rab proteins and release GDP from membrane-bound rabs. GDI1 is expressed primarily in neural and sensory tissues. Mutations in GDI1 have been linked to X-linked nonspecific mental retardation.

GDI1 Antibody (C-term) - References

Martins-de-Souza, D., et al. J Psychiatr Res 44(14):989-991(2010)
Massignan, T., et al. Mol. Cell Proteomics 9(4):611-622(2010)
Chen, Y., et al. Biochem. J. 422(2):229-235(2009)
Zhang, K.J., et al. Yi Chuan 30(5):590-594(2008)
Ewing, R.M., et al. Mol. Syst. Biol. 3, 89 (2007) :