

CHRN4 Antibody (C-term)
Affinity Purified Rabbit Polyclonal Antibody (Pab)
Catalog # AP20082b

Specification

CHRN4 Antibody (C-term) - Product Information

Application	WB,E
Primary Accession	P30926
Other Accession	NP_000741.1
Reactivity	Human
Host	Rabbit
Clonality	Polyclonal
Isotype	Rabbit IgG
Antigen Region	422-450

CHRN4 Antibody (C-term) - Additional Information

Gene ID 1143

Other Names

Neuronal acetylcholine receptor subunit beta-4, CHRN4

Target/Specificity

This CHRN4 antibody is generated from rabbits immunized with a KLH conjugated synthetic peptide between 422-450 amino acids from the C-terminal region of human CHRN4.

Dilution

WB~~1:1000

Format

Purified polyclonal antibody supplied in PBS with 0.09% (W/V) sodium azide. This antibody is purified through a protein A column, followed by peptide affinity purification.

Storage

Maintain refrigerated at 2-8°C for up to 2 weeks. For long term storage store at -20°C in small aliquots to prevent freeze-thaw cycles.

Precautions

CHRN4 Antibody (C-term) is for research use only and not for use in diagnostic or therapeutic procedures.

CHRN4 Antibody (C-term) - Protein Information

Name CHRN4

Function After binding acetylcholine, the AChR responds by an extensive change in conformation that affects all subunits and leads to opening of an ion-conducting channel across the plasma membrane.

Cellular Location

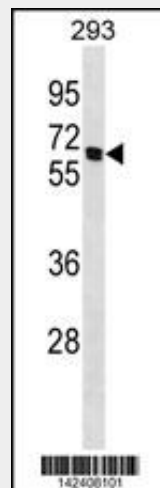
Postsynaptic cell membrane; Multi-pass membrane protein. Cell membrane; Multi-pass membrane protein

CHRNB4 Antibody (C-term) - Protocols

Provided below are standard protocols that you may find useful for product applications.

- [Western Blot](#)
- [Blocking Peptides](#)
- [Dot Blot](#)
- [Immunohistochemistry](#)
- [Immunofluorescence](#)
- [Immunoprecipitation](#)
- [Flow Cytometry](#)
- [Cell Culture](#)

CHRNB4 Antibody (C-term) - Images



CHRNB4 Antibody (C-term) (Cat. #AP20082b) western blot analysis in 293 cell line lysates (35ug/lane). This demonstrates the CHRNB4 antibody detected the CHRNB4 protein (arrow).

CHRNB4 Antibody (C-term) - Background

After binding acetylcholine, the AChR responds by an extensive change in conformation that affects all subunits and leads to opening of an ion-conducting channel across the plasma membrane.

CHRNB4 Antibody (C-term) - References

- Zhang, H., et al. *Neuropsychopharmacology* 35(11):2211-2224(2010)
Saccone, N.L., et al. *Genes Brain Behav.* 9(7):741-750(2010)
Hansen, H.M., et al. *Hum. Mol. Genet.* 19(18):3652-3661(2010)
Amos, C.I., et al. *J. Natl. Cancer Inst.* 102(15):1199-1205(2010)
Li, M.D., et al. *PLoS ONE* 5 (8), E12183 (2010) :