

NHLRC3 Antibody (C-term)
Affinity Purified Rabbit Polyclonal Antibody (Pab)
Catalog # AP20054b

Specification

NHLRC3 Antibody (C-term) - Product Information

Application	WB,E
Primary Accession	O5JS37
Other Accession	NP_001017370.1
Reactivity	Human
Host	Rabbit
Clonality	Polyclonal
Isotype	Rabbit IgG
Calculated MW	38283
Antigen Region	216-245

NHLRC3 Antibody (C-term) - Additional Information

Gene ID 387921

Other Names

NHL repeat-containing protein 3, NHLRC3

Target/Specificity

This NHLRC3 antibody is generated from rabbits immunized with a KLH conjugated synthetic peptide between 216-245 amino acids from the C-terminal region of human NHLRC3.

Dilution

WB~~1:1000

Format

Purified polyclonal antibody supplied in PBS with 0.09% (W/V) sodium azide. This antibody is purified through a protein A column, followed by peptide affinity purification.

Storage

Maintain refrigerated at 2-8°C for up to 2 weeks. For long term storage store at -20°C in small aliquots to prevent freeze-thaw cycles.

Precautions

NHLRC3 Antibody (C-term) is for research use only and not for use in diagnostic or therapeutic procedures.

NHLRC3 Antibody (C-term) - Protein Information

Name NHLRC3

Cellular Location

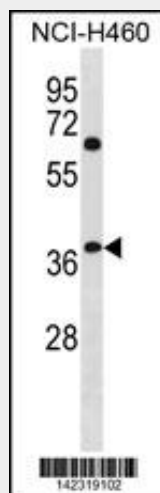
Secreted.

NHLRC3 Antibody (C-term) - Protocols

Provided below are standard protocols that you may find useful for product applications.

- [Western Blot](#)
- [Blocking Peptides](#)
- [Dot Blot](#)
- [Immunohistochemistry](#)
- [Immunofluorescence](#)
- [Immunoprecipitation](#)
- [Flow Cytometry](#)
- [Cell Culture](#)

NHLRC3 Antibody (C-term) - Images



NHLRC3 Antibody (C-term) (Cat. #AP20054b) western blot analysis in NCI-H460 cell line lysates (35ug/lane). This demonstrates the NHLRC3 antibody detected the NHLRC3 protein (arrow).

NHLRC3 Antibody (C-term) - Background

The function of this protein is unknown.

NHLRC3 Antibody (C-term) - References

Strausberg, R.L., et al. Proc. Natl. Acad. Sci. U.S.A. 99(26):16899-16903(2002)