

**PCOLCE2 Antibody (Center)**  
**Affinity Purified Rabbit Polyclonal Antibody (Pab)**  
**Catalog # AP20049c**

**Specification**

---

**PCOLCE2 Antibody (Center) - Product Information**

Application	WB,E
Primary Accession	<a href="#">O9UKZ9</a>
Other Accession	<a href="#">NP_037495.1</a>
Reactivity	Human, Mouse
Host	Rabbit
Clonality	Polyclonal
Isotype	Rabbit IgG
Antigen Region	201-230

**PCOLCE2 Antibody (Center) - Additional Information**

**Gene ID** 26577

**Other Names**

Procollagen C-endopeptidase enhancer 2, Procollagen COOH-terminal proteinase enhancer 2, PCPE-2, Procollagen C-proteinase enhancer 2, PCOLCE2, PCPE2

**Target/Specificity**

This PCOLCE2 antibody is generated from rabbits immunized with a KLH conjugated synthetic peptide between 201-230 amino acids from the Central region of human PCOLCE2.

**Dilution**

WB~~1:2000

**Format**

Purified polyclonal antibody supplied in PBS with 0.09% (W/V) sodium azide. This antibody is purified through a protein A column, followed by peptide affinity purification.

**Storage**

Maintain refrigerated at 2-8°C for up to 2 weeks. For long term storage store at -20°C in small aliquots to prevent freeze-thaw cycles.

**Precautions**

PCOLCE2 Antibody (Center) is for research use only and not for use in diagnostic or therapeutic procedures.

**PCOLCE2 Antibody (Center) - Protein Information**

**Name** PCOLCE2

**Synonyms** PCPE2

**Function** Binds to the C-terminal propeptide of types I and II procollagens and may enhance the cleavage of that propeptide by BMP1.

**Cellular Location**

Secreted.

**Tissue Location**

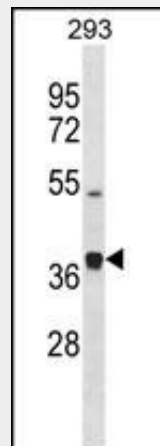
Highly expressed in the heart, trabecular meshwork, pituitary gland, bladder, mammary gland, trachea and placenta and weakly expressed in the brain. Expressed in cartilage

**PCOLCE2 Antibody (Center) - Protocols**

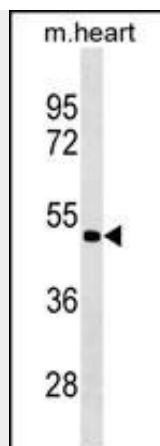
Provided below are standard protocols that you may find useful for product applications.

- [Western Blot](#)
- [Blocking Peptides](#)
- [Dot Blot](#)
- [Immunohistochemistry](#)
- [Immunofluorescence](#)
- [Immunoprecipitation](#)
- [Flow Cytometry](#)
- [Cell Culture](#)

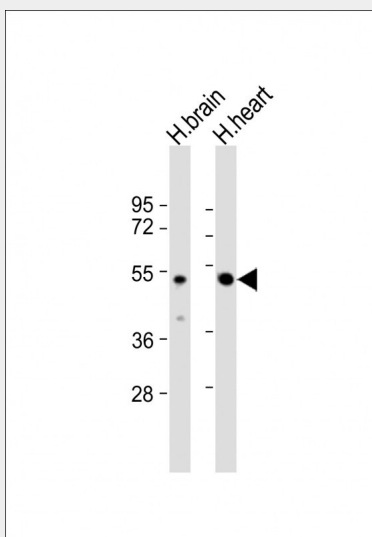
**PCOLCE2 Antibody (Center) - Images**



PCOLCE2 Antibody (Center) (Cat. #AP20049c) western blot analysis in 293 cell line lysates (35ug/lane). This demonstrates the PCOLCE2 antibody detected the PCOLCE2 protein (arrow).



PCOLCE2 Antibody (Center) (Cat. #AP20049c) western blot analysis in mouse heart tissue lysates (35ug/lane). This demonstrates the PCOLCE2 antibody detected the PCOLCE2 protein (arrow).



All lanes : Anti-PCOLCE2 Antibody (Center) at 1:2000 dilution Lane 1: human brain lysate Lane 2: human heart lysate Lysates/proteins at 20 µg per lane. Secondary Goat Anti-Rabbit IgG, (H+L), Peroxidase conjugated at 1/10000 dilution. Predicted band size : 46 kDa Blocking/Dilution buffer: 5% NFDM/TBST.

### PCOLCE2 Antibody (Center) - Background

PCOLCE2 binds to the C-terminal propeptide of types I and II procollagens and may enhance the cleavage of that propeptide by BMP1.

### PCOLCE2 Antibody (Center) - References

- Zhu, J., et al. J. Lipid Res. 50(7):1330-1339(2009)
- Steiglitz, B.M., et al. J. Biol. Chem. 277(51):49820-49830(2002)
- Steiglitz, B.M., et al. Cytogenet. Cell Genet. 95 (3-4), 244-245 (2001) :
- Xu, H., et al. Genomics 66(3):264-273(2000)