

MBNL1 Antibody (C-term)
Affinity Purified Rabbit Polyclonal Antibody (Pab)
Catalog # AP20042b**Specification**

MBNL1 Antibody (C-term) - Product Information

Application	WB,E
Primary Accession	O9NR56
Other Accession	NP_066368.2
Reactivity	Human
Host	Rabbit
Clonality	Polyclonal
Isotype	Rabbit IgG
Calculated MW	41817
Antigen Region	255-284

MBNL1 Antibody (C-term) - Additional Information**Gene ID** 4154**Other Names**

Muscleblind-like protein 1, Triplet-expansion RNA-binding protein, MBNL1, EXP, KIAA0428, MBNL

Target/Specificity

This MBNL1 antibody is generated from rabbits immunized with a KLH conjugated synthetic peptide between 255-284 amino acids from the C-terminal region of human MBNL1.

Dilution

WB~~1:1000

Format

Purified polyclonal antibody supplied in PBS with 0.09% (W/V) sodium azide. This antibody is purified through a protein A column, followed by peptide affinity purification.

Storage

Maintain refrigerated at 2-8°C for up to 2 weeks. For long term storage store at -20°C in small aliquots to prevent freeze-thaw cycles.

Precautions

MBNL1 Antibody (C-term) is for research use only and not for use in diagnostic or therapeutic procedures.

MBNL1 Antibody (C-term) - Protein Information**Name** MBNL1**Synonyms** EXP, KIAA0428, MBNL

Function Mediates pre-mRNA alternative splicing regulation. Acts either as activator or repressor of splicing on specific pre-mRNA targets. Inhibits cardiac troponin-T (TNNT2) pre-mRNA exon inclusion but induces insulin receptor (IR) pre-mRNA exon inclusion in muscle. Antagonizes the alternative splicing activity pattern of CELF proteins. Regulates the TNNT2 exon 5 skipping through competition with U2AF2. Inhibits the formation of the spliceosome A complex on intron 4 of TNNT2 pre-mRNA. Binds to the stem-loop structure within the polypyrimidine tract of TNNT2 intron 4 during spliceosome assembly. Binds to the 5'-YGCU(U/G)Y-3' consensus sequence. Binds to the IR RNA. Binds to expanded CUG repeat RNA, which folds into a hairpin structure containing GC base pairs and bulged, unpaired U residues. Together with RNA binding proteins RBPMS and RBFOX2, activates vascular smooth muscle cells alternative splicing events (PubMed:[37548402](#)). Regulates NCOR2 alternative splicing (By similarity).

Cellular Location

Nucleus. Cytoplasm. Cytoplasmic granule. Note=Localized with DDX1, TIAL1 and YBX1 in stress granules upon stress (PubMed:18335541). Localized in the cytoplasm of multinucleated myotubes (PubMed:18335541). Colocalizes with nuclear foci of retained expanded-repeat transcripts in myotubes from patients affected by myotonic dystrophy (PubMed:10970838, PubMed:11590133, PubMed:11929853)

Tissue Location

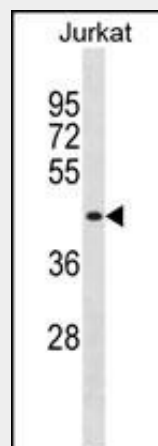
Highly expressed in cardiac, skeletal muscle and during myoblast differentiation. Weakly expressed in other tissues (at protein level). Expressed in heart, brain, placenta, lung, liver, skeletal muscle, kidney and pancreas.

MBNL1 Antibody (C-term) - Protocols

Provided below are standard protocols that you may find useful for product applications.

- [Western Blot](#)
- [Blocking Peptides](#)
- [Dot Blot](#)
- [Immunohistochemistry](#)
- [Immunofluorescence](#)
- [Immunoprecipitation](#)
- [Flow Cytometry](#)
- [Cell Culture](#)

MBNL1 Antibody (C-term) - Images



MBNL1 Antibody (C-term) (Cat. #AP20042b) western blot analysis in Jurkat cell line lysates

(35ug/lane). This demonstrates the MBNL1 antibody detected the MBNL1 protein (arrow).

MBNL1 Antibody (C-term) - Background

Mediates pre-mRNA alternative splicing regulation. Acts either as activator or repressor of splicing on specific pre-mRNA targets. Inhibits cardiac troponin-T (TNNT2) pre-mRNA exon inclusion but induces insulin receptor (IR) pre-mRNA exon inclusion in muscle. Antagonizes the alternative splicing activity pattern of CELF proteins. Regulates the TNNT2 exon 5 skipping through competition with U2AF2. Inhibits the formation of the spliceosome A complex on intron 4 of TNNT2 pre-mRNA. Binds to the stem-loop structure within the polypyrimidine tract of TNNT2 intron 4 during spliceosome assembly. Binds to the 5'-YGCU(U/G)Y-3' consensus sequence. Binds to the IR RNA. Binds to expanded CUG repeat RNA, which folds into a hairpin structure containing GC base pairs and bulged, unpaired U residues.

MBNL1 Antibody (C-term) - References

- Sen, S., et al. J. Biol. Chem. 285(33):25426-25437(2010)
Arambula, J.F., et al. Proc. Natl. Acad. Sci. U.S.A. 106(38):16068-16073(2009)
Cardani, R., et al. Neuromuscul. Disord. 19(5):335-343(2009)
Holt, I., et al. Am. J. Pathol. 174(1):216-227(2009)
Teplova, M., et al. Nat. Struct. Mol. Biol. 15(12):1343-1351(2008)