

CHSY3 Antibody (Center)
Affinity Purified Rabbit Polyclonal Antibody (Pab)
Catalog # AP20033C

Specification

CHSY3 Antibody (Center) - Product Information

Application	WB,E
Primary Accession	O70JA7
Other Accession	O5DTK1 , NP_787052.3
Reactivity	Human
Predicted	Mouse
Host	Rabbit
Clonality	Polyclonal
Isotype	Rabbit IgG
Calculated MW	100284
Antigen Region	531-560

CHSY3 Antibody (Center) - Additional Information

Gene ID 337876

Other Names

Chondroitin sulfate synthase 3, Carbohydrate synthase 2, Chondroitin glucuronyltransferase 3, Chondroitin synthase 2, ChSy-2, Glucuronosyl-N-acetylgalactosaminyl-proteoglycan 4-beta-N-acetylgalactosaminyltransferase II, N-acetylgalactosaminyl-proteoglycan 3-beta-glucuronosyltransferase 3, N-acetylgalactosaminyltransferase 3, CHSY3, CHSY2, CSS3

Target/Specificity

This CHSY3 antibody is generated from rabbits immunized with a KLH conjugated synthetic peptide between 531-560 amino acids from the Central region of human CHSY3.

Dilution

WB~~1:1000

Format

Purified polyclonal antibody supplied in PBS with 0.09% (W/V) sodium azide. This antibody is purified through a protein A column, followed by peptide affinity purification.

Storage

Maintain refrigerated at 2-8°C for up to 2 weeks. For long term storage store at -20°C in small aliquots to prevent freeze-thaw cycles.

Precautions

CHSY3 Antibody (Center) is for research use only and not for use in diagnostic or therapeutic procedures.

CHSY3 Antibody (Center) - Protein Information

Name CHSY3

Synonyms CHSY2, CSS3

Function Has both beta-1,3-glucuronic acid and beta-1,4-N- acetylgalactosamine transferase activity. Transfers glucuronic acid (GlcUA) from UDP-GlcUA and N-acetylgalactosamine (GalNAc) from UDP- GalNAc to the non-reducing end of the elongating chondroitin polymer. Specific activity is much reduced compared to CHSY1.

Cellular Location

Golgi apparatus, Golgi stack membrane; Single-pass type II membrane protein

Tissue Location

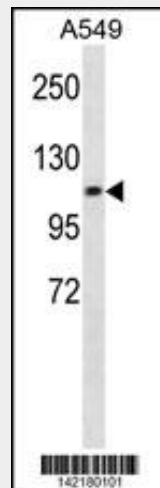
Detected at low levels in brain, cerebral cortex, uterus and small intestine.

CHSY3 Antibody (Center) - Protocols

Provided below are standard protocols that you may find useful for product applications.

- [Western Blot](#)
- [Blocking Peptides](#)
- [Dot Blot](#)
- [Immunohistochemistry](#)
- [Immunofluorescence](#)
- [Immunoprecipitation](#)
- [Flow Cytometry](#)
- [Cell Culture](#)

CHSY3 Antibody (Center) - Images



CHSY3 Antibody (Center) (Cat. #AP20033c) western blot analysis in A549 cell line lysates (35ug/lane). This demonstrates the CHSY3 antibody detected the CHSY3 protein (arrow).

CHSY3 Antibody (Center) - Background

CSS3 is a glycosyltransferase that has both glucuronyltransferase and N-acetylgalactosaminyltransferase activities (Yada et al., 2003 [PubMed 12907687]). [supplied by OMIM].

CHSY3 Antibody (Center) - References

- Izumikawa, T., et al. Biochem. J. 403(3):545-552(2007)
Olsen, J.V., et al. Cell 127(3):635-648(2006)
Olsen, J.V., et al. Cell 127(3):635-648(2006)
Yada, T., et al. J. Biol. Chem. 278(41):39711-39725(2003)