

TTBK1 Antibody (Center)
Affinity Purified Rabbit Polyclonal Antibody (Pab)
Catalog # AP20009c

Specification

TTBK1 Antibody (Center) - Product Information

Application	WB,E
Primary Accession	Q5TCY1
Other Accession	NP_115927.1
Reactivity	Human
Host	Rabbit
Clonality	Polyclonal
Isotype	Rabbit IgG
Calculated MW	142737
Antigen Region	667-695

TTBK1 Antibody (Center) - Additional Information

Gene ID 84630

Other Names

Tau-tubulin kinase 1, Brain-derived tau kinase, TTBK1, BDTK, KIAA1855

Target/Specificity

This TTBK1 antibody is generated from rabbits immunized with a KLH conjugated synthetic peptide between 667-695 amino acids from the Central region of human TTBK1.

Dilution

WB~~1:1000

Format

Purified polyclonal antibody supplied in PBS with 0.09% (W/V) sodium azide. This antibody is purified through a protein A column, followed by peptide affinity purification.

Storage

Maintain refrigerated at 2-8°C for up to 2 weeks. For long term storage store at -20°C in small aliquots to prevent freeze-thaw cycles.

Precautions

TTBK1 Antibody (Center) is for research use only and not for use in diagnostic or therapeutic procedures.

TTBK1 Antibody (Center) - Protein Information

Name TTBK1

Synonyms BDTK, KIAA1855

Function Serine/threonine kinase which is able to phosphorylate TAU on serine, threonine and tyrosine residues. Induces aggregation of TAU.

Cellular Location

Cytoplasm.

Tissue Location

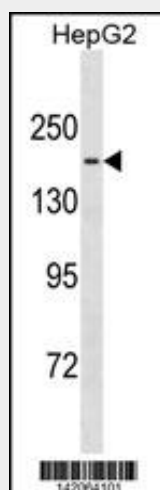
Expressed in the brain, particularly in cortical and hippocampal neurons. Weakly expressed in spinal cord and testis. No expression in adipose tissue, bladder, cervix, colon, esophagus, heart, kidney, liver, lung, ovary, placenta, prostate, skeletal muscle, small intestine, spleen, testis, thymus, thyroid or trachea

TTBK1 Antibody (Center) - Protocols

Provided below are standard protocols that you may find useful for product applications.

- [Western Blot](#)
- [Blocking Peptides](#)
- [Dot Blot](#)
- [Immunohistochemistry](#)
- [Immunofluorescence](#)
- [Immunoprecipitation](#)
- [Flow Cytometry](#)
- [Cell Culture](#)

TTBK1 Antibody (Center) - Images



TTBK1 Antibody (Center) (Cat. #AP20009c) western blot analysis in HepG2 cell line lysates (35ug/lane). This demonstrates the TTBK1 antibody detected the TTBK1 protein (arrow).

TTBK1 Antibody (Center) - Background

Serine/threonine kinase which is able to phosphorylate TAU on serine, threonine and tyrosine residues. Induces aggregation of TAU.

TTBK1 Antibody (Center) - References

Vazquez-Higuera, J.L., et al. Neurobiol. Aging (2010) In press :
Sato, S., et al. J. Neurosci. 28(53):14511-14521(2008)

Ewing, R.M., et al. Mol. Syst. Biol. 3, 89 (2007) :
Mungall, A.J., et al. Nature 425(6960):805-811(2003)
Takahashi, M., et al. FEBS Lett. 372(1):59-64(1995)