

**ETV5 Antibody (N-term)**  
**Affinity Purified Rabbit Polyclonal Antibody (Pab)**  
**Catalog # AP19951a**

**Specification**

---

**ETV5 Antibody (N-term) - Product Information**

Application	WB,E
Primary Accession	<a href="#">P41161</a>
Other Accession	<a href="#">NP_004445.1</a>
Reactivity	Human
Host	Rabbit
Clonality	Polyclonal
Isotype	Rabbit IgG
Calculated MW	57838
Antigen Region	8-37

**ETV5 Antibody (N-term) - Additional Information**

**Gene ID** 2119

**Other Names**

ETS translocation variant 5, Ets-related protein ERM, ETV5, ERM

**Target/Specificity**

This ETV5 antibody is generated from rabbits immunized with a KLH conjugated synthetic peptide between 8-37 amino acids from the N-terminal region of human ETV5.

**Dilution**

WB~~1:1000

**Format**

Purified polyclonal antibody supplied in PBS with 0.09% (W/V) sodium azide. This antibody is purified through a protein A column, followed by peptide affinity purification.

**Storage**

Maintain refrigerated at 2-8°C for up to 2 weeks. For long term storage store at -20°C in small aliquots to prevent freeze-thaw cycles.

**Precautions**

ETV5 Antibody (N-term) is for research use only and not for use in diagnostic or therapeutic procedures.

**ETV5 Antibody (N-term) - Protein Information**

**Name** ETV5

**Synonyms** ERM

**Function** Binds to DNA sequences containing the consensus nucleotide core sequence 5'-GGAA.-3'.

**Cellular Location**

Nucleus.

**Tissue Location**

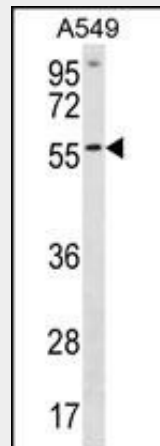
Ubiquitous.

**ETV5 Antibody (N-term) - Protocols**

Provided below are standard protocols that you may find useful for product applications.

- [Western Blot](#)
- [Blocking Peptides](#)
- [Dot Blot](#)
- [Immunohistochemistry](#)
- [Immunofluorescence](#)
- [Immunoprecipitation](#)
- [Flow Cytometry](#)
- [Cell Culture](#)

**ETV5 Antibody (N-term) - Images**



ETV5 Antibody (N-term) (Cat. #AP19951a) western blot analysis in A549 cell line lysates (35ug/lane). This demonstrates the ETV5 antibody detected the ETV5 protein (arrow).

**ETV5 Antibody (N-term) - Background**

ETV5 binds to DNA sequences containing the consensus nucleotide core sequence GGAA.

**ETV5 Antibody (N-term) - References**

Fontaine-Bisson, B., et al. Diabetologia 53(10):2155-2162(2010)  
Lens, Z., et al. Biochem. Biophys. Res. Commun. 399(1):104-110(2010)  
Ng, M.C., et al. J. Clin. Endocrinol. Metab. 95(5):2418-2425(2010)  
Jugessur, A., et al. PLoS ONE 5 (7), E11493 (2010) :  
Elks, C.E., et al. PLoS Med. 7 (5), E1000284 (2010) :