

TES Antibody (N-term)
Affinity Purified Rabbit Polyclonal Antibody (Pab)
Catalog # AP19948a

Specification

TES Antibody (N-term) - Product Information

Application	WB,E
Primary Accession	O9UGI8
Other Accession	O2OLE3 , O90YH9 , O2YDE9 , NP_690042.1 , O2QLB2 , O09YJ2
Reactivity	Human
Predicted	Bovine, Chicken, Horse, Pig, Sheep
Host	Rabbit
Clonality	Polyclonal
Isotype	Rabbit IgG
Calculated MW	47996
Antigen Region	41-70

TES Antibody (N-term) - Additional Information

Gene ID 26136

Other Names

Testin, TESS, TES

Target/Specificity

This TES antibody is generated from rabbits immunized with a KLH conjugated synthetic peptide between 41-70 amino acids from the N-terminal region of human TES.

Dilution

WB~~1:1000

Format

Purified polyclonal antibody supplied in PBS with 0.09% (W/V) sodium azide. This antibody is purified through a protein A column, followed by peptide affinity purification.

Storage

Maintain refrigerated at 2-8°C for up to 2 weeks. For long term storage store at -20°C in small aliquots to prevent freeze-thaw cycles.

Precautions

TES Antibody (N-term) is for research use only and not for use in diagnostic or therapeutic procedures.

TES Antibody (N-term) - Protein Information

Name TES

Function Scaffold protein that may play a role in cell adhesion, cell spreading and in the reorganization of the actin cytoskeleton. Plays a role in the regulation of cell proliferation. May act as a tumor suppressor. Inhibits tumor cell growth.

Cellular Location

Cytoplasm. Cell junction, focal adhesion. Note=Detected along actin stress fibers

Tissue Location

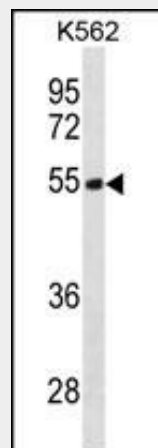
Ubiquitous..

TES Antibody (N-term) - Protocols

Provided below are standard protocols that you may find useful for product applications.

- [Western Blot](#)
- [Blocking Peptides](#)
- [Dot Blot](#)
- [Immunohistochemistry](#)
- [Immunofluorescence](#)
- [Immunoprecipitation](#)
- [Flow Cytometry](#)
- [Cell Culture](#)

TES Antibody (N-term) - Images



TES Antibody (N-term) (Cat. #AP19948a) western blot analysis in K562 cell line lysates (35ug/lane). This demonstrates the TES antibody detected the TES protein (arrow).

TES Antibody (N-term) - Background

Cancer-associated chromosomal changes often involve regions containing fragile sites. This gene maps to a common fragile site on chromosome 7q31.2 designated FRA7G. This gene is similar to mouse Testin, a testosterone-responsive gene encoding a Sertoli cell secretory protein containing three LIM domains. LIM domains are double zinc-finger motifs that mediate protein-protein interactions between transcription factors, cytoskeletal proteins and signaling proteins. Multiple protein isoforms are encoded by transcript variants of this gene.

TES Antibody (N-term) - References

- Qiu, H., et al. Cancer Sci. 101(5):1255-1260(2010)
Gunduz, E., et al. Arch. Otolaryngol. Head Neck Surg. 135(3):254-260(2009)
Zhong, Y., et al. Mol. Cell. Biochem. 320 (1-2), 85-92 (2009) :
Huang, W., et al. Ai Zheng 27(9):984-988(2008)
Boeda, B., et al. Mol. Cell 28(6):1071-1082(2007)