

CPT2 Antibody (Center)
Affinity Purified Rabbit Polyclonal Antibody (Pab)
Catalog # AP19938c

Specification

CPT2 Antibody (Center) - Product Information

Application	WB,E
Primary Accession	P23786
Other Accession	O60HG9 , NP_000089.1
Reactivity	Human
Predicted	Monkey
Host	Rabbit
Clonality	Polyclonal
Isotype	Rabbit IgG
Calculated MW	73777
Antigen Region	212-241

CPT2 Antibody (Center) - Additional Information

Gene ID 1376

Other Names

Carnitine O-palmitoyltransferase 2, mitochondrial, Carnitine palmitoyltransferase II, CPT II, CPT2, CPT1

Target/Specificity

This CPT2 antibody is generated from rabbits immunized with a KLH conjugated synthetic peptide between 212-241 amino acids from the Central region of human CPT2.

Dilution

WB~~1:1000

Format

Purified polyclonal antibody supplied in PBS with 0.09% (W/V) sodium azide. This antibody is purified through a protein A column, followed by peptide affinity purification.

Storage

Maintain refrigerated at 2-8°C for up to 2 weeks. For long term storage store at -20°C in small aliquots to prevent freeze-thaw cycles.

Precautions

CPT2 Antibody (Center) is for research use only and not for use in diagnostic or therapeutic procedures.

CPT2 Antibody (Center) - Protein Information

Name CPT2 ([HGNC:2330](#))

Synonyms CPT1

Function Involved in the intramitochondrial synthesis of acylcarnitines from accumulated acyl-CoA metabolites (PubMed:[20538056](#), PubMed:[24780397](#)). Reconverts acylcarnitines back into the respective acyl-CoA esters that can then undergo beta-oxidation, an essential step for the mitochondrial uptake of long-chain fatty acids and their subsequent beta-oxidation in the mitochondrion. Active with medium (C8- C12) and long-chain (C14-C18) acyl-CoA esters (PubMed:[20538056](#)).

Cellular Location

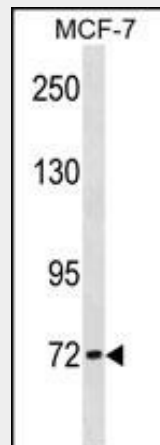
Mitochondrion inner membrane; Peripheral membrane protein; Matrix side

CPT2 Antibody (Center) - Protocols

Provided below are standard protocols that you may find useful for product applications.

- [Western Blot](#)
- [Blocking Peptides](#)
- [Dot Blot](#)
- [Immunohistochemistry](#)
- [Immunofluorescence](#)
- [Immunoprecipitation](#)
- [Flow Cytometry](#)
- [Cell Culture](#)

CPT2 Antibody (Center) - Images



CPT2 Antibody (Center) (Cat. #AP19938c) western blot analysis in MCF-7 cell line lysates (35ug/lane). This demonstrates the CPT2 antibody detected the CPT2 protein (arrow).

CPT2 Antibody (Center) - Background

The protein encoded by this gene is a nuclear protein which is transported to the mitochondrial inner membrane. Together with carnitine palmitoyltransferase I, the encoded protein oxidizes long-chain fatty acids in the mitochondria. Defects in this gene are associated with mitochondrial long-chain fatty-acid (LCFA) oxidation disorders.

CPT2 Antibody (Center) - References

Lan, M.Y., et al. Clin. Genet. 78(6):565-569(2010)
Bailey, S.D., et al. Diabetes Care 33(10):2250-2253(2010)
Ruano, G., et al. Pharmacogenomics 11(7):959-971(2010)
Talmud, P.J., et al. Am. J. Hum. Genet. 85(5):628-642(2009)
Hogan, K.J., et al. Anesth. Analg. 109(4):1070-1072(2009)