

**EBAG9 Antibody (Center)**  
**Affinity Purified Rabbit Polyclonal Antibody (Pab)**  
**Catalog # AP19925c**

**Specification**

---

**EBAG9 Antibody (Center) - Product Information**

Application	WB,E
Primary Accession	<a href="#">O00559</a>
Other Accession	<a href="#">O9D0V7</a> , <a href="#">NP_936056.1</a>
Reactivity	Human
Predicted	Mouse
Host	Rabbit
Clonality	Polyclonal
Isotype	Rabbit IgG
Calculated MW	24377
Antigen Region	88-117

**EBAG9 Antibody (Center) - Additional Information**

**Gene ID** 9166

**Other Names**

Receptor-binding cancer antigen expressed on SiSo cells, Cancer-associated surface antigen RCAS1, Estrogen receptor-binding fragment-associated gene 9 protein, EBAG9, RCAS1

**Target/Specificity**

This EBAG9 antibody is generated from rabbits immunized with a KLH conjugated synthetic peptide between 88-117 amino acids from the Central region of human EBAG9.

**Dilution**

WB~~1:1000

**Format**

Purified polyclonal antibody supplied in PBS with 0.09% (W/V) sodium azide. This antibody is purified through a protein A column, followed by peptide affinity purification.

**Storage**

Maintain refrigerated at 2-8°C for up to 2 weeks. For long term storage store at -20°C in small aliquots to prevent freeze-thaw cycles.

**Precautions**

EBAG9 Antibody (Center) is for research use only and not for use in diagnostic or therapeutic procedures.

**EBAG9 Antibody (Center) - Protein Information**

**Name** EBAG9

## Synonyms RCAS1

**Function** May participate in suppression of cell proliferation and induces apoptotic cell death through activation of interleukin-1-beta converting enzyme (ICE)-like proteases.

## Cellular Location

Golgi apparatus membrane; Single-pass type III membrane protein. Note=According to PubMed:10426319, it also exists as a soluble form which has the same biological activities The existence of such soluble form is however uncertain

## Tissue Location

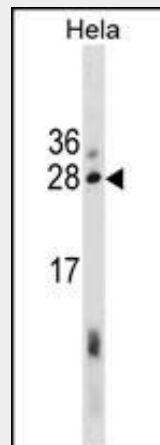
Widely expressed. Expressed in ovary, testis, prostate, thymus, muscle and heart, but not in small intestine, colon, lymph nodes, or peripheral blood lymphocytes. The protein is not detected in any of the above organs

## EBAG9 Antibody (Center) - Protocols

Provided below are standard protocols that you may find useful for product applications.

- [Western Blot](#)
- [Blocking Peptides](#)
- [Dot Blot](#)
- [Immunohistochemistry](#)
- [Immunofluorescence](#)
- [Immunoprecipitation](#)
- [Flow Cytometry](#)
- [Cell Culture](#)

## EBAG9 Antibody (Center) - Images



EBAG9 Antibody (Center) (Cat. #AP19925c) western blot analysis in HeLa cell line lysates (35ug/lane). This demonstrates the EBAG9 antibody detected the EBAG9 protein (arrow).

## EBAG9 Antibody (Center) - Background

This gene was identified as an estrogen-responsive gene. Regulation of transcription by estrogen is mediated by estrogen receptor which binds to the estrogen-responsive element (ERE) found in the 5'-flanking region of this gene. The encoded protein is a tumor-associated antigen that is expressed at high frequency in a

variety of cancers. Two transcript variants differing in the 5' UTR, but encoding the same protein, have been identified for this gene.

#### **EBAG9 Antibody (Center) - References**

- Wolf, J., et al. FASEB J. 24(10):4000-4019(2010)  
Sonoda, K., et al. Exp. Cell Res. 316(11):1795-1803(2010)  
Ali-Fehmi, R., et al. Cancer Biomark 6(1):33-48(2010)  
Yang, Y.C., et al. Zhonghua Wai Ke Za Zhi 47(13):999-1001(2009)  
Adamek, D., et al. Folia Neuropathol 47(3):240-246(2009)