

**MMP26 Antibody (Center)**  
**Affinity Purified Rabbit Polyclonal Antibody (Pab)**  
**Catalog # AP19884c**

**Specification**

---

**MMP26 Antibody (Center) - Product Information**

Application	WB,E
Primary Accession	<a href="#">O9NRE1</a>
Other Accession	<a href="#">NP_068573.2</a>
Reactivity	Human
Host	Rabbit
Clonality	Polyclonal
Isotype	Rabbit IgG
Calculated MW	29708
Antigen Region	96-125

**MMP26 Antibody (Center) - Additional Information**

**Gene ID** 56547

**Other Names**

Matrix metalloproteinase-26, MMP-26, 3424-, Endometase, Matrilysin-2, MMP26

**Target/Specificity**

This MMP26 antibody is generated from rabbits immunized with a KLH conjugated synthetic peptide between 96-125 amino acids from the Central region of human MMP26.

**Dilution**

WB~~1:1000

**Format**

Purified polyclonal antibody supplied in PBS with 0.09% (W/V) sodium azide. This antibody is purified through a protein A column, followed by peptide affinity purification.

**Storage**

Maintain refrigerated at 2-8°C for up to 2 weeks. For long term storage store at -20°C in small aliquots to prevent freeze-thaw cycles.

**Precautions**

MMP26 Antibody (Center) is for research use only and not for use in diagnostic or therapeutic procedures.

**MMP26 Antibody (Center) - Protein Information**

**Name** MMP26

**Function** May hydrolyze collagen type IV, fibronectin, fibrinogen, beta-casein, type I gelatin and alpha-1 proteinase inhibitor. Is also able to activate progelatinase B.

### Cellular Location

Secreted, extracellular space, extracellular matrix

### Tissue Location

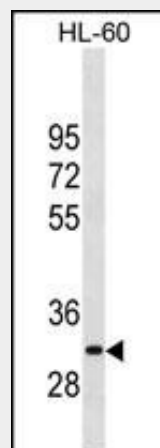
Expressed specifically in uterus and placenta. Is also widely expressed in malignant tumors from different sources as well as in diverse tumor cell lines

## MMP26 Antibody (Center) - Protocols

Provided below are standard protocols that you may find useful for product applications.

- [Western Blot](#)
- [Blocking Peptides](#)
- [Dot Blot](#)
- [Immunohistochemistry](#)
- [Immunofluorescence](#)
- [Immunoprecipitation](#)
- [Flow Cytometry](#)
- [Cell Culture](#)

## MMP26 Antibody (Center) - Images



MMP26 Antibody (Center) (Cat. #AP19884c) western blot analysis in HL-60 cell line lysates (35ug/lane). This demonstrates the MMP26 antibody detected the MMP26 protein (arrow).

## MMP26 Antibody (Center) - Background

Proteins of the matrix metalloproteinase (MMP) family are involved in the breakdown of extracellular matrix in normal physiological processes, such as embryonic development, reproduction, and tissue remodeling, as well as in disease processes, such as arthritis and metastasis. Most MMP's are secreted as inactive proproteins which are activated when cleaved by extracellular proteinases. The encoded protein degrades type IV collagen, fibronectin, fibrinogen, casein, vitronectin, alpha 1-antitrypsin, alpha 2-macroglobulin, and insulin-like growth factor-binding protein 1, and activates MMP9 by cleavage. The protein differs from most MMP family members in that it lacks a conserved C-terminal protein domain.

**MMP26 Antibody (Center) - References**

- de Amorim, R.F., et al. Acta Odontol. Scand. 68(4):228-231(2010)  
Ban, J.Y., et al. Life Sci. 86 (19-20), 756-759 (2010) :  
Deng, Y., et al. Oncol. Rep. 23(1):69-78(2010)  
Johnatty, S.E., et al. PLoS Genet. 6 (7), E1001016 (2010) :  
Liu, J., et al. Reprod. Biol. Endocrinol. 8, 5 (2010) :