

**ELOVL3 Antibody(C-term)**  
**Affinity Purified Rabbit Polyclonal Antibody (Pab)**  
**Catalog # AP19871b**

**Specification**

---

**ELOVL3 Antibody(C-term) - Product Information**

Application	WB,E
Primary Accession	<a href="#">O9HB03</a>
Other Accession	<a href="#">NP_689523.1</a>
Reactivity	Human
Host	Rabbit
Clonality	Polyclonal
Isotype	Rabbit IgG
Calculated MW	31500
Antigen Region	241-270

**ELOVL3 Antibody(C-term) - Additional Information**

**Gene ID** 83401

**Other Names**

Elongation of very long chain fatty acids protein 3, 3-keto acyl-CoA synthase ELOVL3, Cold-inducible glycoprotein of 30 kDa, ELOVL fatty acid elongase 3, ELOVL FA elongase 3, Very-long-chain 3-oxoacyl-CoA synthase 3, ELOVL3, CIG30

**Target/Specificity**

This ELOVL3 antibody is generated from rabbits immunized with a KLH conjugated synthetic peptide between 241-270 amino acids from the C-terminal region of human ELOVL3.

**Dilution**

WB~~1:1000

**Format**

Purified polyclonal antibody supplied in PBS with 0.09% (W/V) sodium azide. This antibody is purified through a protein A column, followed by peptide affinity purification.

**Storage**

Maintain refrigerated at 2-8°C for up to 2 weeks. For long term storage store at -20°C in small aliquots to prevent freeze-thaw cycles.

**Precautions**

ELOVL3 Antibody(C-term) is for research use only and not for use in diagnostic or therapeutic procedures.

**ELOVL3 Antibody(C-term) - Protein Information**

**Name** ELOVL3 {ECO:0000255|HAMAP-Rule:MF\_03203}

## Synonyms CIG30

**Function** Catalyzes the first and rate-limiting reaction of the four reactions that constitute the long-chain fatty acids elongation cycle. This endoplasmic reticulum-bound enzymatic process allows the addition of 2 carbons to the chain of long- and very long-chain fatty acids (VLCFAs) per cycle. Condensing enzyme that exhibits activity toward saturated and unsaturated acyl-CoA substrates with higher activity toward C18 acyl-CoAs, especially C18:0 acyl-CoAs. May participate in the production of saturated and monounsaturated VLCFAs of different chain lengths that are involved in multiple biological processes as precursors of membrane lipids and lipid mediators.

## Cellular Location

Endoplasmic reticulum membrane {ECO:0000255|HAMAP-Rule:MF\_03203, ECO:0000269|PubMed:20937905}; Multi-pass membrane protein {ECO:0000255|HAMAP-Rule:MF\_03203}

## Tissue Location

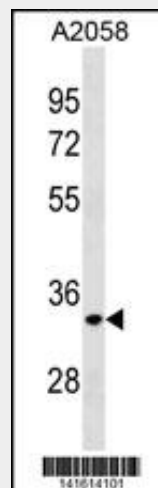
Testis..

## ELOVL3 Antibody(C-term) - Protocols

Provided below are standard protocols that you may find useful for product applications.

- [Western Blot](#)
- [Blocking Peptides](#)
- [Dot Blot](#)
- [Immunohistochemistry](#)
- [Immunofluorescence](#)
- [Immunoprecipitation](#)
- [Flow Cytometry](#)
- [Cell Culture](#)

## ELOVL3 Antibody(C-term) - Images



ELOVL3 Antibody (C-term) (Cat. #AP19871b) western blot analysis in A2058 cell line lysates (35ug/lane). This demonstrates the ELOVL3 antibody detected the ELOVL3 protein (arrow).

## ELOVL3 Antibody(C-term) - Background

ELOVL3 plays a role in fatty acid chain elongation and

formation of neutral lipids required for skin barrier function  
(Westerberg et al., 2004 [PubMed 14581464]).

### **ELOVL3 Antibody(C-term) - References**

- Kobayashi, T., et al. FEBS Lett. 581(17):3157-3163(2007)  
Lamesch, P., et al. Genomics 89(3):307-315(2007)  
Westerberg, R., et al. J. Biol. Chem. 279(7):5621-5629(2004)  
Monne, M., et al. Eur. J. Biochem. 263(1):264-269(1999)  
Lehner, R., et al. Prog. Lipid Res. 35(2):169-201(1996)