

RAP2C Antibody(N-term)
Affinity Purified Rabbit Polyclonal Antibody (Pab)
Catalog # AP19868a

Specification

RAP2C Antibody(N-term) - Product Information

Application	WB,E
Primary Accession	O9Y3L5
Other Accession	O8BU31 , O08DI5 , P61227 , P61226 , P61225 , O06AU2 , O80ZJ1 , P10114 , NP_067006.3
Reactivity	Human, Mouse
Predicted	Pig, Rat, Bovine
Host	Rabbit
Clonality	Polyclonal
Isotype	Rabbit IgG
Calculated MW	20745
Antigen Region	14-42

RAP2C Antibody(N-term) - Additional Information

Gene ID 57826

Other Names

Ras-related protein Rap-2c, RAP2C

Target/Specificity

This RAP2C antibody is generated from rabbits immunized with a KLH conjugated synthetic peptide between 14-42 amino acids from the N-terminal region of human RAP2C.

Dilution

WB~~1:1000

Format

Purified polyclonal antibody supplied in PBS with 0.09% (W/V) sodium azide. This antibody is purified through a protein A column, followed by peptide affinity purification.

Storage

Maintain refrigerated at 2-8°C for up to 2 weeks. For long term storage store at -20°C in small aliquots to prevent freeze-thaw cycles.

Precautions

RAP2C Antibody(N-term) is for research use only and not for use in diagnostic or therapeutic procedures.

RAP2C Antibody(N-term) - Protein Information

Name RAP2C

Function Small GTP-binding protein which cycles between a GDP-bound inactive and a GTP-bound active form. May play a role in cytoskeletal rearrangements and regulate cell spreading through activation of the effector TNIK. May play a role in SRE-mediated gene transcription.

Cellular Location

Cytoplasm. Recycling endosome membrane; Lipid-anchor; Cytoplasmic side

Tissue Location

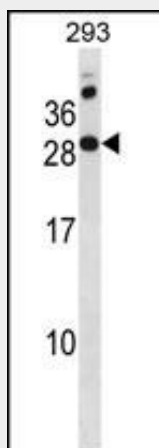
Expressed in liver, skeletal muscle, prostate, uterus, rectum, stomach, and bladder and to a lower extent in brain, kidney, pancreas, and bone marrow. Expressed in mononuclear leukocytes and megakaryocytes.

RAP2C Antibody(N-term) - Protocols

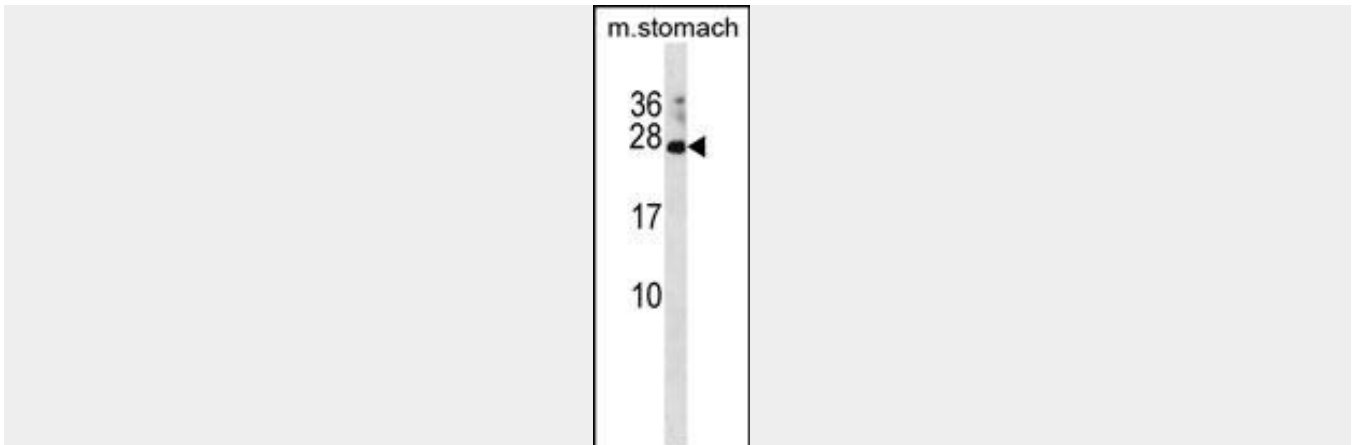
Provided below are standard protocols that you may find useful for product applications.

- [Western Blot](#)
- [Blocking Peptides](#)
- [Dot Blot](#)
- [Immunohistochemistry](#)
- [Immunofluorescence](#)
- [Immunoprecipitation](#)
- [Flow Cytometry](#)
- [Cell Culture](#)

RAP2C Antibody(N-term) - Images



RAP2C Antibody (N-term) (Cat. #AP19868a) western blot analysis in 293 cell line lysates (35ug/lane). This demonstrates the RAP2C antibody detected the RAP2C protein (arrow).



RAP2C Antibody (N-term) (Cat. #AP19868a) western blot analysis in mouse stomach tissue lysates (35ug/lane). This demonstrates the RAP2C antibody detected the RAP2C protein (arrow).

RAP2C Antibody(N-term) - Background

Small GTP-binding protein which cycles between a GDP-bound inactive and a GTP-bound active form. May play a role in cytoskeletal rearrangements and regulate cell spreading through activation of the effector TNIK. May play a role in SRE-mediated gene transcription.

RAP2C Antibody(N-term) - References

Guo, Z., et al. Mol. Biol. Rep. 34(3):137-144(2007)
Paganini, S., et al. Biochimie 88 (3-4), 285-295 (2006) :
Ross, M.T., et al. Nature 434(7031):325-337(2005)