

NFE2L3 Antibody(C-term)
Affinity Purified Rabbit Polyclonal Antibody (Pab)
Catalog # AP19864B

Specification

NFE2L3 Antibody(C-term) - Product Information

Application	WB,E
Primary Accession	O9Y4A8
Other Accession	NP_004280.5
Reactivity	Human
Host	Rabbit
Clonality	Polyclonal
Isotype	Rabbit IgG
Calculated MW	76154
Antigen Region	666-694

NFE2L3 Antibody(C-term) - Additional Information

Gene ID 9603

Other Names

Nuclear factor erythroid 2-related factor 3, NF-E2-related factor 3, NFE2-related factor 3, Nuclear factor, erythroid derived 2, like 3, NFE2L3, NRF3

Target/Specificity

This NFE2L3 antibody is generated from rabbits immunized with a KLH conjugated synthetic peptide between 666-694 amino acids from the C-terminal region of human NFE2L3.

Dilution

WB~~1:1000

Format

Purified polyclonal antibody supplied in PBS with 0.09% (W/V) sodium azide. This antibody is purified through a protein A column, followed by peptide affinity purification.

Storage

Maintain refrigerated at 2-8°C for up to 2 weeks. For long term storage store at -20°C in small aliquots to prevent freeze-thaw cycles.

Precautions

NFE2L3 Antibody(C-term) is for research use only and not for use in diagnostic or therapeutic procedures.

NFE2L3 Antibody(C-term) - Protein Information

Name NFE2L3

Synonyms NRF3

Function Activates erythroid-specific, globin gene expression.

Cellular Location

Nucleus {ECO:0000255|PROSITE-ProRule:PRU00978}.

Tissue Location

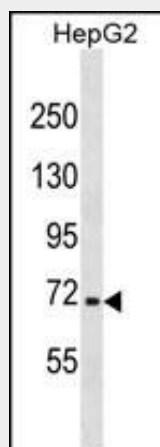
Highly expressed in human placenta and also in B- cell and monocyte cell lines. Low expression in heart, brain, lung, skeletal muscle, kidney and pancreas.

NFE2L3 Antibody(C-term) - Protocols

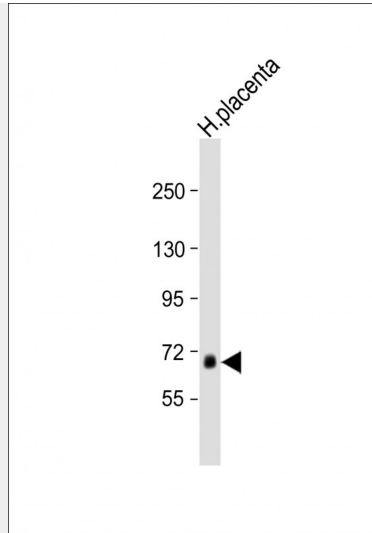
Provided below are standard protocols that you may find useful for product applications.

- [Western Blot](#)
- [Blocking Peptides](#)
- [Dot Blot](#)
- [Immunohistochemistry](#)
- [Immunofluorescence](#)
- [Immunoprecipitation](#)
- [Flow Cytometry](#)
- [Cell Culture](#)

NFE2L3 Antibody(C-term) - Images



NFE2L3 Antibody (C-term) (Cat. #AP19864b) western blot analysis in HepG2 cell line lysates (35ug/lane). This demonstrates the NFE2L3 antibody detected the NFE2L3 protein (arrow).



Anti-NFE2L3 Antibody (C-term) at 1:1000 dilution + human placenta lysate Lysates/proteins at 20 µg per lane. Secondary Goat Anti-Rabbit IgG, (H+L), Peroxidase conjugated at 1/10000 dilution. Predicted band size : 76 kDa Blocking/Dilution buffer: 5% NFD/MTBST.

NFE2L3 Antibody(C-term) - Background

This gene encodes a member of the cap 'n' collar basic-region leucine zipper family of transcription factors. The encoded protein heterodimerizes with small musculoaponeurotic fibrosarcoma factors to bind antioxidant response elements in target genes. This protein is a membrane bound glycoprotein that is targeted to the endoplasmic reticulum and the nuclear envelope. Pseudogenes of this gene are found on chromosomes 16, 17, and 18.

NFE2L3 Antibody(C-term) - References

Bailey, S.D., et al. Diabetes Care 33(10):2250-2253(2010)
Rose, J.E., et al. Mol. Med. 16 (7-8), 247-253 (2010) :
Davila, S., et al. Genes Immun. 11(3):232-238(2010)
Talmud, P.J., et al. Am. J. Hum. Genet. 85(5):628-642(2009)
Zhang, Y., et al. J. Biol. Chem. 284(5):3195-3210(2009)

NFE2L3 Antibody(C-term) - Citations

- [NFE2L3 drives hepatocellular carcinoma cell proliferation by regulating the proteasome-dependent degradation of ISGylated p53.](#)
- [NFE2L3 promotes malignant behavior and EMT of human hepatocellular carcinoma \(HepG2\) cells via Wnt/β-catenin pathway.](#)
- [ALKBH7 mediates necrosis via rewiring of glyoxal metabolism.](#)