

**HBE1 Antibody(Center)**  
**Affinity Purified Rabbit Polyclonal Antibody (Pab)**  
**Catalog # AP19854c****Specification**

---

**HBE1 Antibody(Center) - Product Information**

Application	WB, IHC-P-Leica, FC,E
Primary Accession	<a href="#">P02100</a>
Other Accession	<a href="#">P02103</a> , <a href="#">NP_005321.1</a>
Reactivity	Human
Predicted	Rabbit
Host	Rabbit
Clonality	Polyclonal
Isotype	Rabbit IgG
Antigen Region	55-83

**HBE1 Antibody(Center) - Additional Information****Gene ID** 3046**Other Names**

Hemoglobin subunit epsilon, Epsilon-globin, Hemoglobin epsilon chain, HBE1, HBE

**Target/Specificity**

This HBE1 antibody is generated from rabbits immunized with a KLH conjugated synthetic peptide between 55-83 amino acids from the Central region of human HBE1.

**Dilution**WB~~1:8000  
IHC-P-Leica~~1:500  
FC~~1:25**Format**

Purified polyclonal antibody supplied in PBS with 0.09% (W/V) sodium azide. This antibody is purified through a protein A column, followed by peptide affinity purification.

**Storage**

Maintain refrigerated at 2-8°C for up to 2 weeks. For long term storage store at -20°C in small aliquots to prevent freeze-thaw cycles.

**Precautions**

HBE1 Antibody(Center) is for research use only and not for use in diagnostic or therapeutic procedures.

**HBE1 Antibody(Center) - Protein Information****Name** HBE1

## Synonyms HBE

**Function** The epsilon chain is a beta-type chain of early mammalian embryonic hemoglobin.

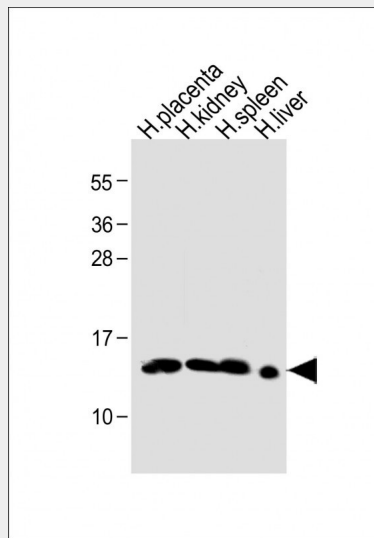
**Tissue Location**  
Red blood cells.

## HBE1 Antibody(Center) - Protocols

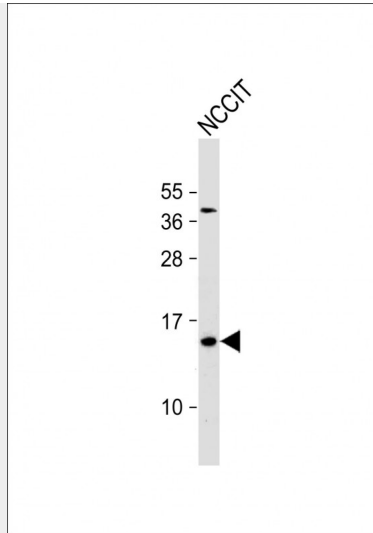
Provided below are standard protocols that you may find useful for product applications.

- [Western Blot](#)
- [Blocking Peptides](#)
- [Dot Blot](#)
- [Immunohistochemistry](#)
- [Immunofluorescence](#)
- [Immunoprecipitation](#)
- [Flow Cytometry](#)
- [Cell Culture](#)

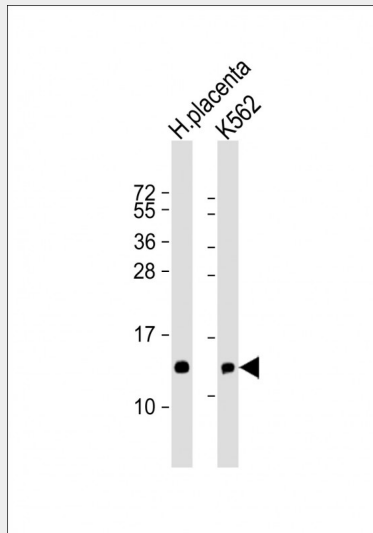
## HBE1 Antibody(Center) - Images



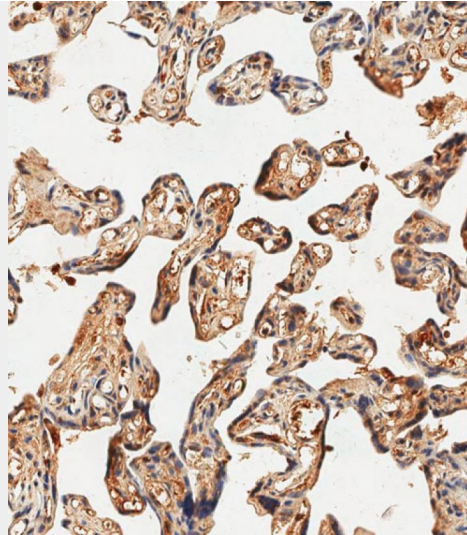
All lanes : Anti- HBE1 Antibody(Center) at 1:1000 dilution Lane 1: human placenta lysate Lane 2: human kidney lysate Lane 3: human spleen lysate Lane 4: human liver lysate Lysates/proteins at 20 µg per lane. Secondary Goat Anti-Rabbit IgG, (H+L), Peroxidase conjugated at 1/10000 dilution. Predicted band size : 16 kDa Blocking/Dilution buffer: 5% NFDM/TBST.



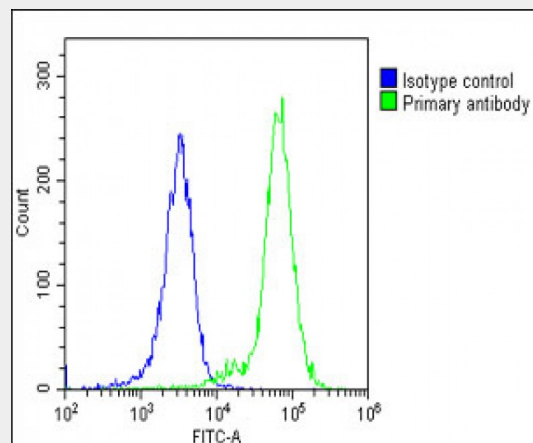
Anti- HBE1 Antibody(Center) at 1:1000 dilution + NCCIT whole cell lysate Lysates/proteins at 20  $\mu$ g per lane. Secondary Goat Anti-Rabbit IgG, (H+L), Peroxidase conjugated at 1/10000 dilution. Predicted band size : 16 kDa Blocking/Dilution buffer: 5% NFDM/TBST.



All lanes : Anti-HBE1 Antibody (Center) at 1:8000 dilution Lane 1: human placenta lysate Lane 2: K562 whole cell lysate Lysates/proteins at 20  $\mu$ g per lane. Secondary Goat Anti-Rabbit IgG, (H+L), Peroxidase conjugated at 1/10000 dilution. Predicted band size : 16 kDa Blocking/Dilution buffer: 5% NFDM/TBST.



Immunohistochemical analysis of paraffin-embedded human placenta tissue using AP19854c performed on the Leica® BOND RXm. Samples were incubated with primary antibody(1/500) for 1 hours at room temperature. A undiluted biotinylated CRF Anti-Polyvalent HRP Polymer antibody was used as the secondary antibody.



Overlay histogram showing K562 cells stained with AP19854c(green line). The cells were fixed with 2% paraformaldehyde (10 min) and then permeabilized with 90% methanol for 10 min. The cells were then incubated in 2% bovine serum albumin to block non-specific protein-protein interactions followed by the antibody (AP19854c, 1:25 dilution) for 60 min at 37°C. The secondary antibody used was Goat-Anti-Rabbit IgG, DyLight® 488 Conjugated Highly Cross-Adsorbed(1583138) at 1/200 dilution for 40 min at 37°C. Isotype control antibody (blue line) was rabbit IgG1 (1µg/1x10<sup>6</sup> cells) used under the same conditions. Acquisition of >10, 000 events was performed.

**HBE1 Antibody(Center) - Background**

The epsilon globin gene (HBE) is normally expressed in the embryonic yolk sac: two epsilon chains together with two zeta chains (an alpha-like globin) constitute the embryonic hemoglobin Hb Gower I; two epsilon chains together with two alpha chains form the embryonic Hb Gower II. Both of these embryonic hemoglobins are normally supplanted by fetal, and later, adult hemoglobin. The five beta-like globin genes are found within a 45 kb cluster on chromosome 11 in the following order: 5'-epsilon - G-gamma - A-gamma - delta - beta-3'

**HBE1 Antibody(Center) - References**

Nuinoon, M., et al. Hum. Genet. (2009) In press :  
Tachavanich, K., et al. Southeast Asian J. Trop. Med. Public Health 40(2):306-316(2009)  
Naka, I., et al. Biochem. Genet. 46 (11-12), 708-711 (2008) :  
Winichagoon, P., et al. Transl Res 152(4):178-184(2008)  
Das, B., et al. Ann. Hum. Biol. 35(4):422-431(2008)

**HBE1 Antibody(Center) - Citations**

- [Heterochromatin Protein 1 \$\gamma\$  Is a Novel Epigenetic Repressor of Human Embryonic  \$\epsilon\$ -Globin Gene Expression.](#)