

SUB1 Antibody(Center)
Affinity Purified Rabbit Polyclonal Antibody (Pab)
Catalog # AP19807c**Specification**

SUB1 Antibody(Center) - Product Information

Application	WB,E
Primary Accession	P53999
Other Accession	O4R947 , NP_006704.3
Reactivity	Human
Predicted	Monkey
Host	Rabbit
Clonality	Polyclonal
Isotype	Rabbit IgG
Calculated MW	14395
Antigen Region	18-47

SUB1 Antibody(Center) - Additional Information**Gene ID** 10923**Other Names**

Activated RNA polymerase II transcriptional coactivator p15, Positive cofactor 4, PC4, SUB1 homolog, p14, SUB1, PC4, RPO2TC1

Target/Specificity

This SUB1 antibody is generated from rabbits immunized with a KLH conjugated synthetic peptide between 18-47 amino acids from the Central region of human SUB1.

Dilution

WB~~1:1000

Format

Purified polyclonal antibody supplied in PBS with 0.09% (W/V) sodium azide. This antibody is purified through a protein A column, followed by peptide affinity purification.

Storage

Maintain refrigerated at 2-8°C for up to 2 weeks. For long term storage store at -20°C in small aliquots to prevent freeze-thaw cycles.

Precautions

SUB1 Antibody(Center) is for research use only and not for use in diagnostic or therapeutic procedures.

SUB1 Antibody(Center) - Protein Information**Name** SUB1

Synonyms PC4, RPO2TC1

Function General coactivator that functions cooperatively with TAFs and mediates functional interactions between upstream activators and the general transcriptional machinery. May be involved in stabilizing the multiprotein transcription complex. Binds single-stranded DNA. Also binds, in vitro, non-specifically to double-stranded DNA (ds DNA).

Cellular Location

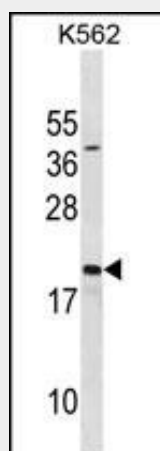
Nucleus.

SUB1 Antibody(Center) - Protocols

Provided below are standard protocols that you may find useful for product applications.

- [Western Blot](#)
- [Blocking Peptides](#)
- [Dot Blot](#)
- [Immunohistochemistry](#)
- [Immunofluorescence](#)
- [Immunoprecipitation](#)
- [Flow Cytometry](#)
- [Cell Culture](#)

SUB1 Antibody(Center) - Images



SUB1 Antibody (Center) (Cat. #AP19807c) western blot analysis in K562 cell line lysates (35ug/lane). This demonstrates the SUB1 antibody detected the SUB1 protein (arrow).

SUB1 Antibody(Center) - Background

General coactivator that functions cooperatively with TAFs and mediates functional interactions between upstream activators and the general transcriptional machinery. May be involved in stabilizing the multiprotein transcription complex. Binds single-stranded DNA. Also binds, in vitro, non-specifically to double-stranded DNA (ds DNA).

SUB1 Antibody(Center) - References

- Das, C., et al. J. Mol. Biol. 397(1):1-12(2010)
Rajagopalan, S., et al. J. Biol. Chem. 284(32):21728-21737(2009)
Mortusewicz, O., et al. J. Cell Biol. 183(5):769-776(2008)

Batta, K., et al. Mol. Cell. Biol. 27(21):7603-7614(2007)
Olsen, J.V., et al. Cell 127(3):635-648(2006)