

ATG13 Antibody (Center S355.)
Affinity Purified Rabbit Polyclonal Antibody (Pab)
Catalog # AP19789c

Specification

ATG13 Antibody (Center S355.) - Product Information

Application	WB,E
Primary Accession	O75143
Other Accession	O91Y11 , NP_001136145.1
Reactivity	Human
Predicted	Mouse
Host	Rabbit
Clonality	Polyclonal
Isotype	Rabbit IgG
Calculated MW	56572
Antigen Region	333-362

ATG13 Antibody (Center S355.) - Additional Information

Gene ID 9776

Other Names

Autophagy-related protein 13, ATG13, KIAA0652

Target/Specificity

This ATG13 antibody is generated from rabbits immunized with a KLH conjugated synthetic peptide between 333-362 amino acids from the Central region of human ATG13.

Dilution

WB~~1:1000

Format

Purified polyclonal antibody supplied in PBS with 0.09% (W/V) sodium azide. This antibody is purified through a protein A column, followed by peptide affinity purification.

Storage

Maintain refrigerated at 2-8°C for up to 2 weeks. For long term storage store at -20°C in small aliquots to prevent freeze-thaw cycles.

Precautions

ATG13 Antibody (Center S355.) is for research use only and not for use in diagnostic or therapeutic procedures.

ATG13 Antibody (Center S355.) - Protein Information

Name ATG13

Synonyms KIAA0652

Function Autophagy factor required for autophagosome formation and mitophagy. Target of the TOR kinase signaling pathway that regulates autophagy through the control of the phosphorylation status of ATG13 and ULK1, and the regulation of the ATG13-ULK1-RB1CC1 complex. Through its regulation of ULK1 activity, plays a role in the regulation of the kinase activity of mTORC1 and cell proliferation.

Cellular Location

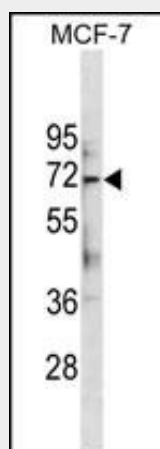
Cytoplasm, cytosol. Preautophagosomal structure. Note=Under starvation conditions, is localized to punctate structures primarily representing the isolation membrane; the isolation membrane sequesters a portion of the cytoplasm resulting in autophagosome formation

ATG13 Antibody (Center S355.) - Protocols

Provided below are standard protocols that you may find useful for product applications.

- [Western Blot](#)
- [Blocking Peptides](#)
- [Dot Blot](#)
- [Immunohistochemistry](#)
- [Immunofluorescence](#)
- [Immunoprecipitation](#)
- [Flow Cytometry](#)
- [Cell Culture](#)

ATG13 Antibody (Center S355.) - Images



ATG13 Antibody (Center S355.) (Cat. #AP19789c) western blot analysis in MCF-7 cell line lysates (35ug/lane). This demonstrates the ATG13 antibody detected the ATG13 protein (arrow).

ATG13 Antibody (Center S355.) - Background

Autophagy factor required for autophagosome formation. Target of the TOR kinase signaling pathway that regulates autophagy through the control of the phosphorylation status of ATG13 and ULK1, and the regulation of the ATG13-ULK1-RB1CC1 complex.

ATG13 Antibody (Center S355.) - References

- Ferreira, R.C., et al. Nat. Genet. 42(9):777-780(2010)
Hosokawa, N., et al. Autophagy 5(7):973-979(2009)
Mercer, C.A., et al. Autophagy 5(5):649-662(2009)

Ganley, I.G., et al. J. Biol. Chem. 284(18):12297-12305(2009)
Chan, E.Y., et al. Mol. Cell. Biol. 29(1):157-171(2009)