

CRYM Antibody (Center)
Affinity Purified Rabbit Polyclonal Antibody (Pab)
Catalog # AP19781c

Specification

CRYM Antibody (Center) - Product Information

Application	WB,E
Primary Accession	O14894
Other Accession	NP_001879.1
Reactivity	Mouse
Host	Rabbit
Clonality	Polyclonal
Isotype	Rabbit IgG
Calculated MW	33776
Antigen Region	154-183

CRYM Antibody (Center) - Additional Information

Gene ID 1428

Other Names

Ketimine reductase mu-crystallin, NADP-regulated thyroid-hormone-binding protein, CRYM, THBP

Target/Specificity

This CRYM antibody is generated from rabbits immunized with a KLH conjugated synthetic peptide between 154-183 amino acids from the Central region of human CRYM.

Dilution

WB~~1:1000

Format

Purified polyclonal antibody supplied in PBS with 0.09% (W/V) sodium azide. This antibody is purified through a protein A column, followed by peptide affinity purification.

Storage

Maintain refrigerated at 2-8°C for up to 2 weeks. For long term storage store at -20°C in small aliquots to prevent freeze-thaw cycles.

Precautions

CRYM Antibody (Center) is for research use only and not for use in diagnostic or therapeutic procedures.

CRYM Antibody (Center) - Protein Information

Name CRYM

Synonyms THBP

Function Specifically catalyzes the reduction of imine bonds in brain substrates that may include cystathionine ketimine (CysK) and lanthionine ketimine (LK). Binds thyroid hormone which is a strong reversible inhibitor. Presumably involved in the regulation of the free intracellular concentration of triiodothyronine and access to its nuclear receptors.

Cellular Location

Cytoplasm.

Tissue Location

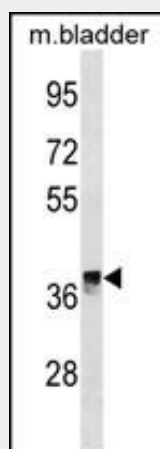
Expressed in neural tissue, muscle and kidney.

CRYM Antibody (Center) - Protocols

Provided below are standard protocols that you may find useful for product applications.

- [Western Blot](#)
- [Blocking Peptides](#)
- [Dot Blot](#)
- [Immunohistochemistry](#)
- [Immunofluorescence](#)
- [Immunoprecipitation](#)
- [Flow Cytometry](#)
- [Cell Culture](#)

CRYM Antibody (Center) - Images



CRYM Antibody (Center) (Cat. #AP19781c) western blot analysis in mouse bladder tissue lysates (35ug/lane). This demonstrates the CRYM antibody detected the CRYM protein (arrow).

CRYM Antibody (Center) - Background

Crystallins are separated into two classes: taxon-specific and ubiquitous. The former class is also called phylogenetically-restricted crystallins. The latter class constitutes the major proteins of vertebrate eye lens and maintains the transparency and refractive index of the lens. This gene encodes a taxon-specific crystallin protein that binds NADPH and has sequence similarity to bacterial ornithine cyclodeaminases. The encoded protein does not perform a structural role in lens tissue, and instead it binds thyroid hormone for possible regulatory or

developmental roles. Mutations in this gene have been associated with autosomal dominant non-syndromic deafness. Multiple alternatively spliced transcript variants have been found for this gene.

CRYM Antibody (Center) - References

- Martins-de-Souza, D., et al. J Psychiatr Res (2010) In press :
Al-Kafaji, G., et al. Biochem. Biophys. Res. Commun. 391(4):1585-1591(2010)
Malinowska, K., et al. Prostate 69(10):1109-1118(2009)
Martins-de-Souza, D., et al. J Psychiatr Res 43(11):978-986(2009)
Martins-de-Souza, D., et al. Eur Arch Psychiatry Clin Neurosci 259(3):151-163(2009)