

LRIG1 Antibody (C-term)
Affinity Purified Rabbit Polyclonal Antibody (Pab)
Catalog # AP19769b

Specification

LRIG1 Antibody (C-term) - Product Information

Application	WB,E
Primary Accession	O96JA1
Other Accession	P70193 , NP_056356.2
Reactivity	Mouse
Host	Rabbit
Clonality	Polyclonal
Isotype	Rabbit IgG
Calculated MW	119113
Antigen Region	801-829

LRIG1 Antibody (C-term) - Additional Information

Gene ID 26018

Other Names

Leucine-rich repeats and immunoglobulin-like domains protein 1, LIG-1, LRIG1, LIG1

Target/Specificity

This LRIG1 antibody is generated from rabbits immunized with a KLH conjugated synthetic peptide between 801-829 amino acids from the C-terminal region of human LRIG1.

Dilution

WB~~1:1000

Format

Purified polyclonal antibody supplied in PBS with 0.09% (W/V) sodium azide. This antibody is purified through a protein A column, followed by peptide affinity purification.

Storage

Maintain refrigerated at 2-8°C for up to 2 weeks. For long term storage store at -20°C in small aliquots to prevent freeze-thaw cycles.

Precautions

LRIG1 Antibody (C-term) is for research use only and not for use in diagnostic or therapeutic procedures.

LRIG1 Antibody (C-term) - Protein Information

Name LRIG1 {ECO:0000303|PubMed:15282549}

Synonyms LIG1

Function Acts as a feedback negative regulator of signaling by receptor tyrosine kinases, through a mechanism that involves enhancement of receptor ubiquitination and accelerated intracellular degradation.

Cellular Location

Cell membrane; Single-pass type I membrane protein

Tissue Location

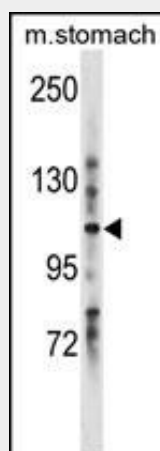
Widely expressed..

LRIG1 Antibody (C-term) - Protocols

Provided below are standard protocols that you may find useful for product applications.

- [Western Blot](#)
- [Blocking Peptides](#)
- [Dot Blot](#)
- [Immunohistochemistry](#)
- [Immunofluorescence](#)
- [Immunoprecipitation](#)
- [Flow Cytometry](#)
- [Cell Culture](#)

LRIG1 Antibody (C-term) - Images



LRIG1 Antibody (C-term) (Cat. #AP19769b) western blot analysis in mouse stomach tissue lysates (35ug/lane). This demonstrates the LRIG1 antibody detected the LRIG1 protein (arrow).

LRIG1 Antibody (C-term) - Background

LRIG1 act as a feedback negative regulator of signaling by receptor tyrosine kinases, through a mechanism that involves enhancement of receptor ubiquitination and accelerated intracellular degradation.

LRIG1 Antibody (C-term) - References

Rose, J. Phd, et al. Mol. Med. (2010) In press :
Ye, F., et al. J. Neurooncol. 94(2):183-194(2009)
Ljuslinder, I., et al. Breast Cancer Res. 11 (3), 403 (2009) :
Miller, J.K., et al. Cancer Res. 68(20):8286-8294(2008)

Stutz, M.A., et al. Oncogene 27(43):5741-5752(2008)