

ANXA6 Antibody(C-term)
Affinity Purified Rabbit Polyclonal Antibody (Pab)
Catalog # AP19706b

Specification

ANXA6 Antibody(C-term) - Product Information

Application	WB,E
Primary Accession	P08133
Other Accession	P79134 , NP_001146.2 , NP_001180473.1
Reactivity	Human
Predicted	Bovine
Host	Rabbit
Clonality	Polyclonal
Isotype	Rabbit IgG
Calculated MW	75873
Antigen Region	147-175

ANXA6 Antibody(C-term) - Additional Information

Gene ID 309

Other Names

Annexin A6, 67 kDa calelectrin, Annexin VI, Annexin-6, Calphobindin-II, CPB-II, Chromobindin-20, Lipocortin VI, Protein III, p68, p70, ANXA6, ANX6

Target/Specificity

This ANXA6 antibody is generated from rabbits immunized with a KLH conjugated synthetic peptide between 147-175 amino acids from the C-terminal region of human ANXA6.

Dilution

WB~~1:1000

Format

Purified polyclonal antibody supplied in PBS with 0.09% (W/V) sodium azide. This antibody is purified through a protein A column, followed by peptide affinity purification.

Storage

Maintain refrigerated at 2-8°C for up to 2 weeks. For long term storage store at -20°C in small aliquots to prevent freeze-thaw cycles.

Precautions

ANXA6 Antibody(C-term) is for research use only and not for use in diagnostic or therapeutic procedures.

ANXA6 Antibody(C-term) - Protein Information

Name ANXA6

Synonyms ANX6

Function May associate with CD21. May regulate the release of Ca(2+) from intracellular stores.

Cellular Location

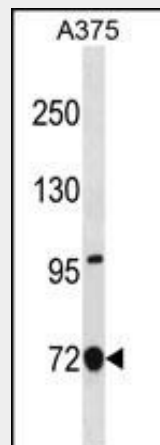
Cytoplasm. Melanosome. Note=Identified by mass spectrometry in melanosome fractions from stage I to stage IV

ANXA6 Antibody(C-term) - Protocols

Provided below are standard protocols that you may find useful for product applications.

- [Western Blot](#)
- [Blocking Peptides](#)
- [Dot Blot](#)
- [Immunohistochemistry](#)
- [Immunofluorescence](#)
- [Immunoprecipitation](#)
- [Flow Cytometry](#)
- [Cell Culture](#)

ANXA6 Antibody(C-term) - Images



ANXA6 Antibody (C-term) (Cat. #AP19706b) western blot analysis in A375 cell line lysates (35ug/lane). This demonstrates the ANXA6 antibody detected the ANXA6 protein (arrow).

ANXA6 Antibody(C-term) - Background

ANXA6 may associate with CD21. May regulate the release of Ca(2+) from intracellular stores.