

**VIPR1 Antibody(C-term)**  
**Affinity Purified Rabbit Polyclonal Antibody (Pab)**  
**Catalog # AP19704b**

**Specification**

---

**VIPR1 Antibody(C-term) - Product Information**

Application	WB,E
Primary Accession	<a href="#">P32241</a>
Other Accession	<a href="#">NP_004615.2</a>
Reactivity	Human
Host	Rabbit
Clonality	Polyclonal
Isotype	Rabbit IgG
Calculated MW	51547
Antigen Region	305-334

**VIPR1 Antibody(C-term) - Additional Information**

**Gene ID** 7433

**Other Names**

Vasoactive intestinal polypeptide receptor 1, VIP-R-1, Pituitary adenylate cyclase-activating polypeptide type II receptor, PACAP type II receptor, PACAP-R-2, PACAP-R2, VPAC1, VIPR1

**Target/Specificity**

This VIPR1 antibody is generated from rabbits immunized with a KLH conjugated synthetic peptide between 305-334 amino acids from the C-terminal region of human VIPR1.

**Dilution**

WB~~1:1000

**Format**

Purified polyclonal antibody supplied in PBS with 0.09% (W/V) sodium azide. This antibody is purified through a protein A column, followed by peptide affinity purification.

**Storage**

Maintain refrigerated at 2-8°C for up to 2 weeks. For long term storage store at -20°C in small aliquots to prevent freeze-thaw cycles.

**Precautions**

VIPR1 Antibody(C-term) is for research use only and not for use in diagnostic or therapeutic procedures.

**VIPR1 Antibody(C-term) - Protein Information**

**Name** VIPR1 ([HGNC:12694](#))

**Function** G protein-coupled receptor activated by the neuropeptides vasoactive intestinal peptide

(VIP) and pituitary adenylate cyclase- activating polypeptide (ADCYAP1/PACAP) (PubMed:[35477937](#), PubMed:[36385145](#), PubMed:[8179610](#)). Binds VIP and both PACAP27 and PACAP38 bioactive peptides with the following order of ligand affinity VIP = PACAP27 > PACAP38 (PubMed:[35477937](#), PubMed:[8179610](#)). Ligand binding causes a conformation change that triggers signaling via guanine nucleotide-binding proteins (G proteins) and modulates the activity of downstream effectors. Activates cAMP-dependent pathway (PubMed:[35477937](#), PubMed:[36385145](#), PubMed:[8179610](#)).

#### Cellular Location

Cell membrane; Multi-pass membrane protein

#### Tissue Location

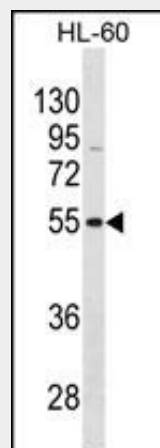
In lung, HT-29 colonic epithelial cells, Raji B- lymphoblasts. Lesser extent in brain, heart, kidney, liver and placenta. Not expressed in CD4+ or CD8+ T-cells. Expressed in the T- cell lines HARRIS, HuT 78, Jurkat and SUP-T1, but not in the T-cell lines Peer, MOLT-4, HSB and YT.

### VIPR1 Antibody(C-term) - Protocols

Provided below are standard protocols that you may find useful for product applications.

- [Western Blot](#)
- [Blocking Peptides](#)
- [Dot Blot](#)
- [Immunohistochemistry](#)
- [Immunofluorescence](#)
- [Immunoprecipitation](#)
- [Flow Cytometry](#)
- [Cell Culture](#)

### VIPR1 Antibody(C-term) - Images



VIPR1 Antibody (C-term) (Cat. #AP19704b) western blot analysis in HL-60 cell line lysates (35ug/lane). This demonstrates the VIPR1 antibody detected the VIPR1 protein (arrow).

### VIPR1 Antibody(C-term) - Background

This gene encodes a receptor for vasoactive intestinal peptide, a small neuropeptide. Vasoactive intestinal peptide is involved in smooth muscle relaxation, exocrine and endocrine secretion, and water and ion flux in lung and intestinal epithelia.

Its actions are effected through integral membrane receptors associated with a guanine nucleotide binding protein which activates adenylate cyclase.

#### **VIPR1 Antibody(C-term) - References**

Mlakar, V., et al. Cancer Invest. 28(5):487-494(2010)  
Burian, B., et al. Peptides 31(4):603-608(2010)  
Cocco, E., et al. PLoS ONE 5 (8), E12067 (2010) :  
Yokoyama, K., et al. Nephron Clin Pract 115 (4), C237-C243 (2010) :  
Chakrabarti, B., et al. Autism Res 2(3):157-177(2009)