

TUBG1 Antibody(N-term)
Affinity Purified Rabbit Polyclonal Antibody (Pab)
Catalog # AP19702a

Specification

TUBG1 Antibody(N-term) - Product Information

Application	WB,E
Primary Accession	P23258
Other Accession	O8VCK3 , O9NRH3 , O32KM1 , P23330 , P83888 , P83887 , O0VCD2 , NP_001061.2
Reactivity	Human
Predicted	Bovine, Mouse, Rat, Xenopus
Host	Rabbit
Clonality	Polyclonal
Isotype	Rabbit IgG
Calculated MW	51170
Antigen Region	23-51

TUBG1 Antibody(N-term) - Additional Information

Gene ID 7283

Other Names

Tubulin gamma-1 chain, Gamma-1-tubulin, Gamma-tubulin complex component 1, GCP-1, TUBG1, TUBG

Target/Specificity

This TUBG1 antibody is generated from rabbits immunized with a KLH conjugated synthetic peptide between 23-51 amino acids from the N-terminal region of human TUBG1.

Dilution

WB~~1:1000

Format

Purified polyclonal antibody supplied in PBS with 0.09% (W/V) sodium azide. This antibody is purified through a protein A column, followed by peptide affinity purification.

Storage

Maintain refrigerated at 2-8°C for up to 2 weeks. For long term storage store at -20°C in small aliquots to prevent freeze-thaw cycles.

Precautions

TUBG1 Antibody(N-term) is for research use only and not for use in diagnostic or therapeutic procedures.

TUBG1 Antibody(N-term) - Protein Information

Name TUBG1 ([HGNC:12417](#))

Synonyms TUBG

Function Tubulin is the major constituent of microtubules. The gamma chain is found at microtubule organizing centers (MTOC) such as the spindle poles or the centrosome. Pericentriolar matrix component that regulates alpha/beta chain minus-end nucleation, centrosome duplication and spindle formation.

Cellular Location

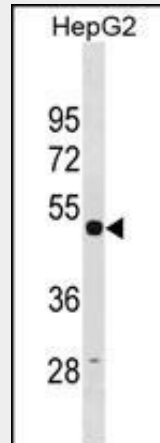
Cytoplasm, cytoskeleton, microtubule organizing center, centrosome. Cytoplasm, cytoskeleton, spindle. Note=Localizes to mitotic spindle microtubules.

TUBG1 Antibody(N-term) - Protocols

Provided below are standard protocols that you may find useful for product applications.

- [Western Blot](#)
- [Blocking Peptides](#)
- [Dot Blot](#)
- [Immunohistochemistry](#)
- [Immunofluorescence](#)
- [Immunoprecipitation](#)
- [Flow Cytometry](#)
- [Cell Culture](#)

TUBG1 Antibody(N-term) - Images



TUBG1 Antibody (N-term) (Cat. #AP19702a) western blot analysis in HepG2 cell line lysates (35ug/lane). This demonstrates the TUBG1 antibody detected the TUBG1 protein (arrow).

TUBG1 Antibody(N-term) - Background

This gene encodes a member of the tubulin superfamily. The encoded protein localizes to the centrosome where it binds to microtubules as part of a complex referred to as the gamma-tubulin ring complex. The protein mediates microtubule nucleation and is required for microtubule formation and progression of the cell cycle. A pseudogene of this gene is found on chromosome 7.

TUBG1 Antibody(N-term) - References

Olson, J.E., et al. Breast Cancer Res. Treat. (2010) In press :
Couch, F.J., et al. Cancer Epidemiol. Biomarkers Prev. 19(1):251-257(2010)
Alvarado-Kristensson, M., et al. Nat. Cell Biol. 11(9):1081-1092(2009)
Zhang, X., et al. J. Cell. Sci. 122 (PT 13), 2240-2251 (2009) :
Haren, L., et al. PLoS ONE 4 (6), E5976 (2009) :