

PRPS1L1 Antibody(N-term)
Affinity Purified Rabbit Polyclonal Antibody (Pab)
Catalog # AP19684A

Specification

PRPS1L1 Antibody(N-term) - Product Information

Application	WB,E
Primary Accession	P21108
Other Accession	NP_787082.1
Reactivity	Human
Host	Rabbit
Clonality	Polyclonal
Isotype	Rabbit IgG
Calculated MW	34839
Antigen Region	77-106

PRPS1L1 Antibody(N-term) - Additional Information

Gene ID 221823

Other Names

Ribose-phosphate pyrophosphokinase 3, Phosphoribosyl pyrophosphate synthase 1-like 1, PRPS1-like 1, Phosphoribosyl pyrophosphate synthase III, PRS-III, PRPS1L1, PRPS3, PRPSL

Target/Specificity

This PRPS1L1 antibody is generated from rabbits immunized with a KLH conjugated synthetic peptide between 77-106 amino acids from the N-terminal region of human PRPS1L1.

Dilution

WB~~1:1000

Format

Purified polyclonal antibody supplied in PBS with 0.09% (W/V) sodium azide. This antibody is purified through a protein A column, followed by peptide affinity purification.

Storage

Maintain refrigerated at 2-8°C for up to 2 weeks. For long term storage store at -20°C in small aliquots to prevent freeze-thaw cycles.

Precautions

PRPS1L1 Antibody(N-term) is for research use only and not for use in diagnostic or therapeutic procedures.

PRPS1L1 Antibody(N-term) - Protein Information

Name PRPS1L1

Synonyms PRPS3, PRPSL

Function Catalyzes the synthesis of phosphoribosylpyrophosphate (PRPP) that is essential for nucleotide synthesis.

Tissue Location

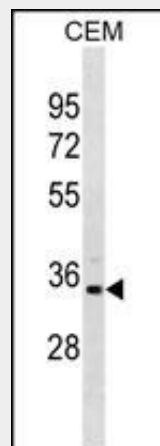
Testis.

PRPS1L1 Antibody(N-term) - Protocols

Provided below are standard protocols that you may find useful for product applications.

- [Western Blot](#)
- [Blocking Peptides](#)
- [Dot Blot](#)
- [Immunohistochemistry](#)
- [Immunofluorescence](#)
- [Immunoprecipitation](#)
- [Flow Cytometry](#)
- [Cell Culture](#)

PRPS1L1 Antibody(N-term) - Images



PRPS1L1 Antibody (N-term) (Cat. #AP19684a) western blot analysis in CEM cell line lysates (35ug/lane). This demonstrates the PRPS1L1 antibody detected the PRPS1L1 protein (arrow).

PRPS1L1 Antibody(N-term) - Background

This intronless gene is specifically expressed in the testis, and encodes a protein that is highly homologous to the two subunits of phosphoribosylpyrophosphate synthetase encoded by human X-linked genes, PRPS1 and PRPS2. These enzymes convert pyrimidine, purine or pyridine bases to the corresponding ribonucleoside monophosphates. In vitro transcription/translation and site-directed mutagenesis studies indicate that translation of this mRNA initiates exclusively at a non-AUG (ACG) codon. [provided by RefSeq].

PRPS1L1 Antibody(N-term) - References

Venter, J.C., et al. Science 291(5507):1304-1351(2001)
Taira, M., et al. J. Biol. Chem. 265(27):16491-16497(1990)