

LGALS7 Antibody(Center)
Affinity Purified Rabbit Polyclonal Antibody (Pab)
Catalog # AP19680c

Specification

LGALS7 Antibody(Center) - Product Information

Application	WB,E
Primary Accession	P47929
Other Accession	NP_001035972.1 , NP_002298.1
Reactivity	Human
Host	Rabbit
Clonality	Polyclonal
Isotype	Rabbit IgG
Calculated MW	15075
Antigen Region	54-82

LGALS7 Antibody(Center) - Additional Information

Gene ID 3963;653499

Other Names

Galectin-7, Gal-7, HKL-14, PI7, p53-induced gene 1 protein, LGALS7, PIG1

Target/Specificity

This LGALS7 antibody is generated from rabbits immunized with a KLH conjugated synthetic peptide between 54-82 amino acids from the Central region of human LGALS7.

Dilution

WB~~1:1000

Format

Purified polyclonal antibody supplied in PBS with 0.09% (W/V) sodium azide. This antibody is purified through a protein A column, followed by peptide affinity purification.

Storage

Maintain refrigerated at 2-8°C for up to 2 weeks. For long term storage store at -20°C in small aliquots to prevent freeze-thaw cycles.

Precautions

LGALS7 Antibody(Center) is for research use only and not for use in diagnostic or therapeutic procedures.

LGALS7 Antibody(Center) - Protein Information

Name LGALS7

Synonyms PIG1

Function Could be involved in cell-cell and/or cell-matrix interactions necessary for normal growth control. Pro-apoptotic protein that functions intracellularly upstream of JNK activation and cytochrome c release.

Cellular Location

Cytoplasm. Nucleus. Secreted. Note=May be secreted by a non-classical secretory pathway

Tissue Location

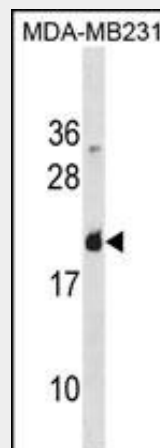
Mainly expressed in stratified squamous epithelium.

LGALS7 Antibody(Center) - Protocols

Provided below are standard protocols that you may find useful for product applications.

- [Western Blot](#)
- [Blocking Peptides](#)
- [Dot Blot](#)
- [Immunohistochemistry](#)
- [Immunofluorescence](#)
- [Immunoprecipitation](#)
- [Flow Cytometry](#)
- [Cell Culture](#)

LGALS7 Antibody(Center) - Images



LGALS7 Antibody (Center) (Cat. #AP19680c) western blot analysis in MDA-MB231 cell line lysates (35ug/lane). This demonstrates the LGALS7 antibody detected the LGALS7 protein (arrow).

LGALS7 Antibody(Center) - Background

The galectins are a family of beta-galactoside-binding proteins implicated in modulating cell-cell and cell-matrix interactions. Differential and in situ hybridization studies indicate that this lectin is specifically expressed in keratinocytes and found mainly in stratified squamous epithelium. A duplicate copy of this gene (GeneID:653499) is found adjacent to, but on the opposite strand on chromosome 19.

LGALS7 Antibody(Center) - References

Demers, M., et al. Am. J. Pathol. 176(6):3023-3031(2010)
Zhu, X., et al. BMC Cancer 10, 290 (2010) :
Park, J.E., et al. Oncol. Rep. 22(6):1373-1379(2009)
Demers, M., et al. Biochem. Biophys. Res. Commun. 387(3):425-429(2009)
Saussez, S., et al. Int. J. Oncol. 34(2):433-439(2009)