

EBP Antibody(C-term)
Affinity Purified Rabbit Polyclonal Antibody (Pab)
Catalog # AP19661b

Specification

EBP Antibody(C-term) - Product Information

Application	WB,E
Primary Accession	O15125
Other Accession	NP_006570.1
Reactivity	Human
Host	Rabbit
Clonality	Polyclonal
Isotype	Rabbit IgG
Calculated MW	26353
Antigen Region	201-230

EBP Antibody(C-term) - Additional Information

Gene ID 10682

Other Names

3-beta-hydroxysteroid-Delta(8), Delta(7)-isomerase, Cholesterol Delta-isomerase, Delta(8)-Delta(7) sterol isomerase, D8-D7 sterol isomerase, Emopamil-binding protein, EBP

Target/Specificity

This EBP antibody is generated from rabbits immunized with a KLH conjugated synthetic peptide between 201-230 amino acids from the C-terminal region of human EBP.

Dilution

WB~~1:1000

Format

Purified polyclonal antibody supplied in PBS with 0.09% (W/V) sodium azide. This antibody is purified through a protein A column, followed by peptide affinity purification.

Storage

Maintain refrigerated at 2-8°C for up to 2 weeks. For long term storage store at -20°C in small aliquots to prevent freeze-thaw cycles.

Precautions

EBP Antibody(C-term) is for research use only and not for use in diagnostic or therapeutic procedures.

EBP Antibody(C-term) - Protein Information

Name EBP ([HGNC:3133](#))

Function Catalyzes the conversion of Delta(8)-sterols to their corresponding Delta(7)-isomers.

Cellular Location

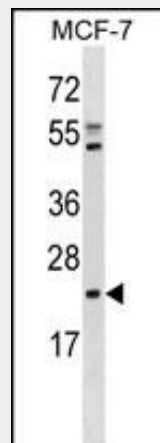
Endoplasmic reticulum membrane; Multi-pass membrane protein. Nucleus envelope Cytoplasmic vesicle. Note=During interphase, detected on the endoplasmic reticulum and the nuclear envelope. During mitosis, detected on cytoplasmic vesicles

EBP Antibody(C-term) - Protocols

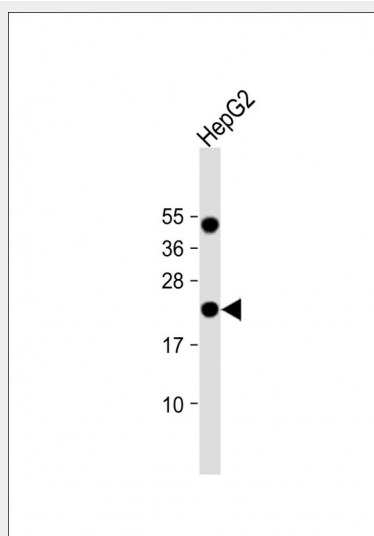
Provided below are standard protocols that you may find useful for product applications.

- [Western Blot](#)
- [Blocking Peptides](#)
- [Dot Blot](#)
- [Immunohistochemistry](#)
- [Immunofluorescence](#)
- [Immunoprecipitation](#)
- [Flow Cytometry](#)
- [Cell Culture](#)

EBP Antibody(C-term) - Images



EBP Antibody (C-term) (Cat. #AP19661b) western blot analysis in MCF-7 cell line lysates (35ug/lane). This demonstrates the EBP antibody detected the EBP protein (arrow).



Anti-EBP Antibody (C-term) at 1:1000 dilution + HepG2 whole cell lysate Lysates/proteins at 20 µg per lane. Secondary Goat Anti-Rabbit IgG, (H+L), Peroxidase conjugated at 1/10000 dilution. Predicted band size : 26 kDa Blocking/Dilution buffer: 5% NFDM/TBST.

EBP Antibody(C-term) - Background

The protein encoded by this gene is an integral membrane protein of the endoplasmic reticulum. It is a high affinity binding protein for the antiischemic phenylalkylamine Ca²⁺ antagonist [3H]emopamil and the photoaffinity label [3H]azidopamil. It is similar to sigma receptors and may be a member of a superfamily of high affinity drug-binding proteins in the endoplasmic reticulum of different tissues. This protein shares structural features with bacterial and eukaryotic drug transporting proteins. It has four putative transmembrane segments and contains two conserved glutamate residues which may be involved in the transport of cationic amphiphilics. Another prominent feature of this protein is its high content of aromatic amino acid residues (>23%) in its transmembrane segments. These aromatic amino acid residues have been suggested to be involved in the drug transport by the P-glycoprotein. Mutations in this gene cause Chondrodysplasia punctata 2 (CDPX2; also known as Conradi-Hunermann syndrome).

EBP Antibody(C-term) - References

Lu, Y., et al. J. Lipid Res. 49(12):2582-2589(2008)
Ausavarat, S., et al. Eur J Dermatol 18(4):391-393(2008)
Steijlen, P.M., et al. Br. J. Dermatol. 157(6):1225-1229(2007)
Guggenberger, C., et al. J. Steroid Biochem. Mol. Biol. 104 (3-5), 105-109 (2007) :
Rakheja, D., et al. Pediatr. Dev. Pathol. 10(2):142-148(2007)