

**COLQ Antibody(C-term)**  
**Affinity Purified Rabbit Polyclonal Antibody (Pab)**  
**Catalog # AP19625b****Specification**

---

**COLQ Antibody(C-term) - Product Information**

Application	WB,E
Primary Accession	<a href="#">O9Y215</a>
Other Accession	<a href="#">O35167</a> , <a href="#">O35348</a> , <a href="#">NP_536800.2</a>
Reactivity	Human, Mouse
Predicted	Rat
Host	Rabbit
Clonality	Polyclonal
Isotype	Rabbit IgG
Calculated MW	47766
Antigen Region	324-353

**COLQ Antibody(C-term) - Additional Information****Gene ID** 8292**Other Names**

Acetylcholinesterase collagenic tail peptide, AChE Q subunit, Acetylcholinesterase-associated collagen, COLQ

**Target/Specificity**

This COLQ antibody is generated from rabbits immunized with a KLH conjugated synthetic peptide between 324-353 amino acids from the C-terminal region of human COLQ.

**Dilution**

WB~~1:1000

**Format**

Purified polyclonal antibody supplied in PBS with 0.09% (W/V) sodium azide. This antibody is purified through a protein A column, followed by peptide affinity purification.

**Storage**

Maintain refrigerated at 2-8°C for up to 2 weeks. For long term storage store at -20°C in small aliquots to prevent freeze-thaw cycles.

**Precautions**

COLQ Antibody(C-term) is for research use only and not for use in diagnostic or therapeutic procedures.

**COLQ Antibody(C-term) - Protein Information****Name** COLQ

**Function** Anchors the catalytic subunits of asymmetric AChE to the synaptic basal lamina.

**Cellular Location**

Synapse.

**Tissue Location**

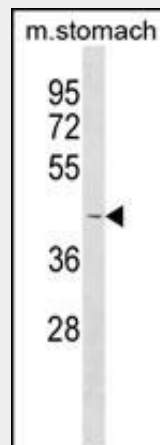
Found at the end plate of skeletal muscle.

**COLQ Antibody(C-term) - Protocols**

Provided below are standard protocols that you may find useful for product applications.

- [Western Blot](#)
- [Blocking Peptides](#)
- [Dot Blot](#)
- [Immunohistochemistry](#)
- [Immunofluorescence](#)
- [Immunoprecipitation](#)
- [Flow Cytometry](#)
- [Cell Culture](#)

**COLQ Antibody(C-term) - Images**



COLQ Antibody (C-term) (Cat. #AP19625b) western blot analysis in mouse stomach tissue lysates (35ug/lane). This demonstrates the COLQ antibody detected the COLQ protein (arrow).

**COLQ Antibody(C-term) - Background**

This gene encodes the subunit of a collagen-like molecule associated with acetylcholinesterase in skeletal muscle. Each molecule is composed of three identical subunits. Each subunit contains a proline-rich attachment domain (PRAD) that binds an acetylcholinesterase tetramer to anchor the catalytic subunit of the enzyme to the basal lamina. Mutations in this gene are associated with endplate acetylcholinesterase deficiency. Multiple transcript variants encoding different isoforms have been found for this gene.

**COLQ Antibody(C-term) - References**

Mihaylova, V., et al. Brain 131 (PT 3), 747-759 (2008) :  
Schreiner, F., et al. Neuromuscul. Disord. 17(3):262-265(2007)  
Ting, A.K., et al. Chem. Biol. Interact. 157-158, 63-70 (2005) :  
Dvir, H., et al. EMBO J. 23(22):4394-4405(2004)  
Ishigaki, K., et al. Neuromuscul. Disord. 13(3):236-244(2003)