

Mouse Hras1 Antibody(C-term)
Affinity Purified Rabbit Polyclonal Antibody (Pab)
Catalog # AP19575b

Specification

Mouse Hras1 Antibody(C-term) - Product Information

Application	WB,E
Primary Accession	O61411
Other Accession	P20171 , P01112 , P08642
Reactivity	Mouse
Predicted	Chicken, Human, Rat
Host	Rabbit
Clonality	Polyclonal
Isotype	Rabbit IgG
Calculated MW	21298
Antigen Region	151-179

Mouse Hras1 Antibody(C-term) - Additional Information

Gene ID 15461

Other Names

GTPase HRas, H-Ras-1, Transforming protein p21, c-H-ras, p21ras, GTPase HRas, N-terminally processed, Hras, Hras1

Target/Specificity

This Mouse Hras1 antibody is generated from rabbits immunized with a KLH conjugated synthetic peptide between 151-179 amino acids from the C-terminal region of mouse Hras1.

Dilution

WB~~1:1000

Format

Purified polyclonal antibody supplied in PBS with 0.09% (W/V) sodium azide. This antibody is purified through a protein A column, followed by peptide affinity purification.

Storage

Maintain refrigerated at 2-8°C for up to 2 weeks. For long term storage store at -20°C in small aliquots to prevent freeze-thaw cycles.

Precautions

Mouse Hras1 Antibody(C-term) is for research use only and not for use in diagnostic or therapeutic procedures.

Mouse Hras1 Antibody(C-term) - Protein Information

Name Hras

Synonyms Hras1

Function Ras proteins bind GDP/GTP and possess intrinsic GTPase activity.

Cellular Location

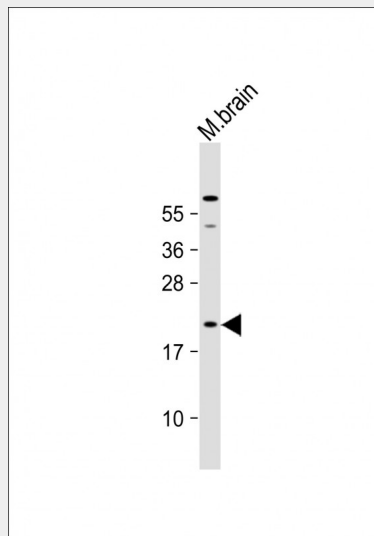
Cell membrane. Cell membrane; Lipid-anchor; Cytoplasmic side. Golgi apparatus. Golgi apparatus membrane; Lipid-anchor. Note=Shuttles between the plasma membrane and the Golgi apparatus. The active GTP-bound form is localized most strongly to membranes than the inactive GDP-bound form (By similarity).

Mouse Hras1 Antibody(C-term) - Protocols

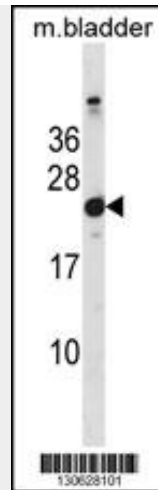
Provided below are standard protocols that you may find useful for product applications.

- [Western Blot](#)
- [Blocking Peptides](#)
- [Dot Blot](#)
- [Immunohistochemistry](#)
- [Immunofluorescence](#)
- [Immunoprecipitation](#)
- [Flow Cytometry](#)
- [Cell Culture](#)

Mouse Hras1 Antibody(C-term) - Images



Anti-Mouse Hras1 Antibody (C-term) at 1:1000 dilution + mouse brain lysate Lysates/proteins at 20 µg per lane. Secondary Goat Anti-Rabbit IgG, (H+L), Peroxidase conjugated at 1/10000 dilution. Predicted band size : 21 kDa Blocking/Dilution buffer: 5% NFD/MTBST.



Mouse Hras1 Antibody (C-term) (Cat. #AP19575b) western blot analysis in mouse bladder tissue lysates (35ug/lane). This demonstrates the Mouse Hras1 antibody detected the Mouse Hras1 protein (arrow).

Mouse Hras1 Antibody(C-term) - Background

Ras proteins bind GDP/GTP and possess intrinsic GTPase activity.