

**PHOSPHO2 Antibody(N-term)**  
**Affinity Purified Rabbit Polyclonal Antibody (Pab)**  
**Catalog # AP19574a**

**Specification**

---

**PHOSPHO2 Antibody(N-term) - Product Information**

Application	WB,E
Primary Accession	<a href="#">Q8TCD6</a>
Other Accession	<a href="#">NP_001008489.1</a>
Reactivity	Human, Mouse
Host	Rabbit
Clonality	Polyclonal
Isotype	Rabbit IgG
Calculated MW	27769
Antigen Region	12-40

**PHOSPHO2 Antibody(N-term) - Additional Information**

**Gene ID** 493911

**Other Names**

Pyridoxal phosphate phosphatase PHOSPHO2, PHOSPHO2

**Target/Specificity**

This PHOSPHO2 antibody is generated from rabbits immunized with a KLH conjugated synthetic peptide between 12-40 amino acids from the N-terminal region of human PHOSPHO2.

**Dilution**

WB~~1:1000

**Format**

Purified polyclonal antibody supplied in PBS with 0.09% (W/V) sodium azide. This antibody is purified through a protein A column, followed by peptide affinity purification.

**Storage**

Maintain refrigerated at 2-8°C for up to 2 weeks. For long term storage store at -20°C in small aliquots to prevent freeze-thaw cycles.

**Precautions**

PHOSPHO2 Antibody(N-term) is for research use only and not for use in diagnostic or therapeutic procedures.

**PHOSPHO2 Antibody(N-term) - Protein Information**

**Name** PHOSPHO2

**Function** Phosphatase that has high activity toward pyridoxal 5'- phosphate (PLP). Also active at much lower level toward pyrophosphate, phosphoethanolamine (PEA), phosphocholine (PCho),

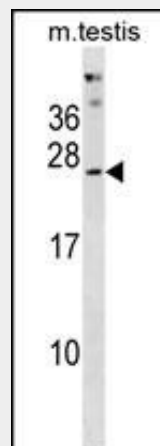
phospho-l-tyrosine, fructose-6-phosphate, p-nitrophenyl phosphate, and h-glycerophosphate.

### PHOSPHO2 Antibody(N-term) - Protocols

Provided below are standard protocols that you may find useful for product applications.

- [Western Blot](#)
- [Blocking Peptides](#)
- [Dot Blot](#)
- [Immunohistochemistry](#)
- [Immunofluorescence](#)
- [Immunoprecipitation](#)
- [Flow Cytometry](#)
- [Cell Culture](#)

### PHOSPHO2 Antibody(N-term) - Images



PHOSPHO2 Antibody (N-term) (Cat. #AP19574a) western blot analysis in mouse testis tissue lysates (35ug/lane). This demonstrates the PHOSPHO2 antibody detected the PHOSPHO2 protein (arrow).

### PHOSPHO2 Antibody(N-term) - Background

Phosphatase that has high activity toward pyridoxal 5'-phosphate (PLP). Also active at much lower level toward pyrophosphate, phosphoethanolamine (PEA), phosphocholine (PCho), phospho-l-tyrosine, fructose-6-phosphate, p-nitrophenyl phosphate, and h-glycerophosphate.

### PHOSPHO2 Antibody(N-term) - References

- Oh, J.H., et al. Mamm. Genome 16(12):942-954(2005)  
Roberts, S.J., et al. Biochim. Biophys. Acta 1752(1):73-82(2005)