

**EPS8L2 Antibody(N-term)**  
**Affinity Purified Rabbit Polyclonal Antibody (Pab)**  
**Catalog # AP19537A****Specification**

---

**EPS8L2 Antibody(N-term) - Product Information**

Application	WB,E
Primary Accession	<a href="#">O9H6S3</a>
Other Accession	<a href="#">O99K30</a> , <a href="#">NP_073609.2</a>
Reactivity	Human
Predicted	Mouse
Host	Rabbit
Clonality	Polyclonal
Isotype	Rabbit IgG
Calculated MW	80621
Antigen Region	162-190

**EPS8L2 Antibody(N-term) - Additional Information****Gene ID** 64787**Other Names**

Epidermal growth factor receptor kinase substrate 8-like protein 2, EPS8-like protein 2, Epidermal growth factor receptor pathway substrate 8-related protein 2, EPS8-related protein 2, EPS8L2, EPS8R2

**Target/Specificity**

This EPS8L2 antibody is generated from rabbits immunized with a KLH conjugated synthetic peptide between 162-190 amino acids from the N-terminal region of human EPS8L2.

**Dilution**

WB~~1:1000

**Format**

Purified polyclonal antibody supplied in PBS with 0.09% (W/V) sodium azide. This antibody is purified through a protein A column, followed by peptide affinity purification.

**Storage**

Maintain refrigerated at 2-8°C for up to 2 weeks. For long term storage store at -20°C in small aliquots to prevent freeze-thaw cycles.

**Precautions**

EPS8L2 Antibody(N-term) is for research use only and not for use in diagnostic or therapeutic procedures.

**EPS8L2 Antibody(N-term) - Protein Information****Name** EPS8L2

## Synonyms EPS8R2

**Function** Stimulates guanine exchange activity of SOS1. May play a role in membrane ruffling and remodeling of the actin cytoskeleton. In the cochlea, is required for stereocilia maintenance in adult hair cells (By similarity).

## Cellular Location

Cytoplasm. Cell projection, stereocilium {ECO:0000250|UniProtKB:Q99K30}. Note=Localizes at the tips of the stereocilia of the inner and outer hair cells {ECO:0000250|UniProtKB:Q99K30}

## Tissue Location

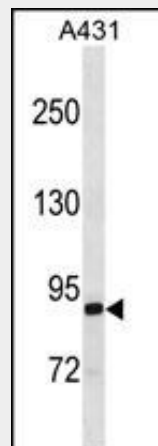
Detected in fibroblasts and placenta.

## EPS8L2 Antibody(N-term) - Protocols

Provided below are standard protocols that you may find useful for product applications.

- [Western Blot](#)
- [Blocking Peptides](#)
- [Dot Blot](#)
- [Immunohistochemistry](#)
- [Immunofluorescence](#)
- [Immunoprecipitation](#)
- [Flow Cytometry](#)
- [Cell Culture](#)

## EPS8L2 Antibody(N-term) - Images



EPS8L2 Antibody (N-term) (Cat. #AP19537a) western blot analysis in A431 cell line lysates (35ug/lane). This demonstrates the EPS8L2 antibody detected the EPS8L2 protein (arrow).

## EPS8L2 Antibody(N-term) - Background

This gene encodes a member of the EPS8 gene family. The encoded protein, like other members of the family, is thought to link growth factor stimulation to actin organization, generating functional redundancy in the pathways that regulate actin cytoskeletal remodeling.

## EPS8L2 Antibody(N-term) - References

Kim, J.E., et al. J. Proteome Res. 4(4):1339-1346(2005)  
Offenhauser, N., et al. Mol. Biol. Cell 15(1):91-98(2004)  
Tocchetti, A., et al. Genomics 81(2):234-244(2003)