

**EIF4B Antibody (C-term)**  
**Purified Rabbit Polyclonal Antibody (Pab)**  
**Catalog # AP1950b****Specification**

---

**EIF4B Antibody (C-term) - Product Information**

Application	<b>WB, IHC-P,E</b>
Primary Accession	<a href="#">P23588</a>
Other Accession	<a href="#">Q8BGD9</a> , <a href="#">Q8WYK5</a>
Reactivity	<b>Human</b>
Predicted	<b>Mouse</b>
Host	<b>Rabbit</b>
Clonality	<b>Polyclonal</b>
Isotype	<b>Rabbit IgG</b>
Calculated MW	<b>69151</b>
Antigen Region	<b>546-575</b>

**EIF4B Antibody (C-term) - Additional Information****Gene ID** 1975**Other Names**

Eukaryotic translation initiation factor 4B, eIF-4B, EIF4B

**Target/Specificity**

This EIF4B antibody is generated from rabbits immunized with a KLH conjugated synthetic peptide between 546-575 amino acids from the C-terminal region of human EIF4B.

**Dilution**WB~~1:1000  
IHC-P~~1:50~100**Format**

Purified polyclonal antibody supplied in PBS with 0.09% (W/V) sodium azide. This antibody is prepared by Saturated Ammonium Sulfate (SAS) precipitation followed by dialysis against PBS.

**Storage**

Maintain refrigerated at 2-8°C for up to 2 weeks. For long term storage store at -20°C in small aliquots to prevent freeze-thaw cycles.

**Precautions**

EIF4B Antibody (C-term) is for research use only and not for use in diagnostic or therapeutic procedures.

**EIF4B Antibody (C-term) - Protein Information****Name** EIF4B

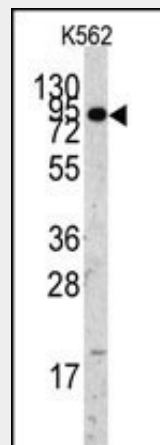
**Function** Required for the binding of mRNA to ribosomes. Functions in close association with EIF4-F and EIF4-A. Binds near the 5'-terminal cap of mRNA in presence of EIF-4F and ATP. Promotes the ATPase activity and the ATP-dependent RNA unwinding activity of both EIF4-A and EIF4-F.

### EIF4B Antibody (C-term) - Protocols

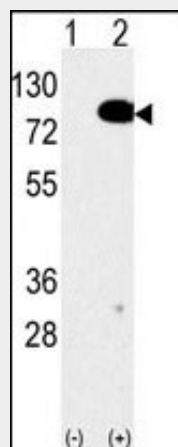
Provided below are standard protocols that you may find useful for product applications.

- [Western Blot](#)
- [Blocking Peptides](#)
- [Dot Blot](#)
- [Immunohistochemistry](#)
- [Immunofluorescence](#)
- [Immunoprecipitation](#)
- [Flow Cytometry](#)
- [Cell Culture](#)

### EIF4B Antibody (C-term) - Images

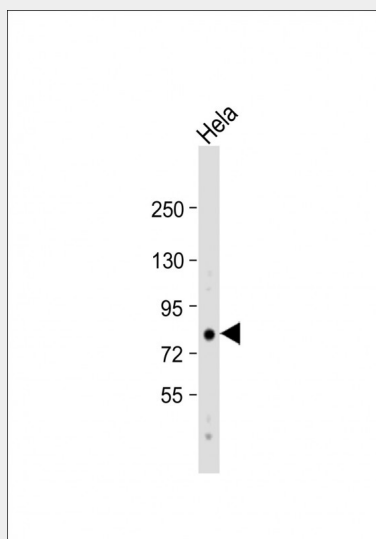


Western blot analysis of anti-EIF4B Antibody (C-term) Pab (Cat.#AP1950b) in K562 cell line lysates (35ug/lane). EIF4B (arrow) was detected using the purified Pab.

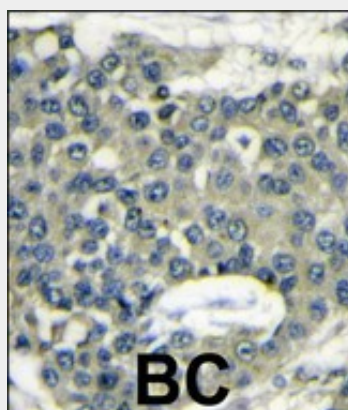


Western blot analysis of anti-EIF4B Antibody (C-term) Pab (Cat.#AP1950b) in 293 cell line lysates transiently transfected with the EIF4B gene (2ug/lane). EIF4B (arrow) was detected using the

purified Pab.



Anti-EIF4B Antibody (C-term) at 1:1000 dilution + HeLa whole cell lysate Lysates/proteins at 20  $\mu$ g per lane. Secondary Goat Anti-Rabbit IgG, (H+L), Peroxidase conjugated at 1/10000 dilution. Predicted band size : 69 kDa Blocking/Dilution buffer: 5% NFDm/TBST.



Formalin-fixed and paraffin-embedded human breast carcinoma reacted with EIF4B Antibody (C-term)(Cat.#AP1950b), which was peroxidase-conjugated to the secondary antibody, followed by DAB staining. This data demonstrates the use of this antibody for immunohistochemistry; clinical relevance has not been evaluated.

#### **EIF4B Antibody (C-term) - Background**

EIF4B is required for the binding of mRNA to ribosomes. It functions in close association with EIF4-F and EIF4-A by binding near the 5'- terminal cap of mRNA in presence of EIF-4F and ATP. This gene also promotes the ATPase activity and the ATP-dependent RNA unwinding activity of both EIF4-A and EIF4-F

#### **EIF4B Antibody (C-term) - References**

- Doepker, R.C., et al., J. Virol. 78(9):4684-4699 (2004).
- Fleming, K., et al., Biochemistry 42(30):8966-8975 (2003).
- Milburn, S.C., et al., EMBO J. 9(9):2783-2790 (1990).