

MYBBP1A Antibody(N-term)
Affinity Purified Rabbit Polyclonal Antibody (Pab)
Catalog # AP19507A

Specification

MYBBP1A Antibody(N-term) - Product Information

Application	WB,E
Primary Accession	O9BOG0
Other Accession	NP_055335.2
Reactivity	Human
Host	Rabbit
Clonality	Polyclonal
Isotype	Rabbit IgG
Calculated MW	148855
Antigen Region	258-287

MYBBP1A Antibody(N-term) - Additional Information

Gene ID 10514

Other Names

Myb-binding protein 1A, MYBBP1A, P160

Target/Specificity

This MYBBP1A antibody is generated from rabbits immunized with a KLH conjugated synthetic peptide between 258-287 amino acids from the N-terminal region of human MYBBP1A.

Dilution

WB~~1:1000

Format

Purified polyclonal antibody supplied in PBS with 0.09% (W/V) sodium azide. This antibody is purified through a protein A column, followed by peptide affinity purification.

Storage

Maintain refrigerated at 2-8°C for up to 2 weeks. For long term storage store at -20°C in small aliquots to prevent freeze-thaw cycles.

Precautions

MYBBP1A Antibody(N-term) is for research use only and not for use in diagnostic or therapeutic procedures.

MYBBP1A Antibody(N-term) - Protein Information

Name MYBBP1A

Synonyms P160

Function May activate or repress transcription via interactions with sequence specific DNA-binding proteins (By similarity). Repression may be mediated at least in part by histone deacetylase activity (HDAC activity) (By similarity). Acts as a corepressor and in concert with CRY1, represses the transcription of the core circadian clock component PER2 (By similarity). Preferentially binds to dimethylated histone H3 'Lys-9' (H3K9me2) on the PER2 promoter (By similarity). Has a role in rRNA biogenesis together with PWP1 (PubMed:[29065309](#)).

Cellular Location

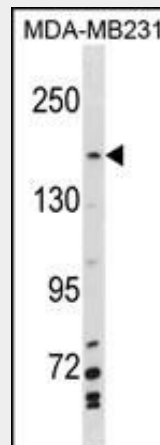
Cytoplasm. Nucleus. Nucleus, nucleolus. Note=Shuttles between the nucleus and cytoplasm. Nuclear import may be mediated by KPNA2, while export appears to depend partially on XPO1/CRM1 (By similarity). Predominantly nucleolar. {ECO:0000250|UniProtKB:Q7TPV4}

MYBBP1A Antibody(N-term) - Protocols

Provided below are standard protocols that you may find useful for product applications.

- [Western Blot](#)
- [Blocking Peptides](#)
- [Dot Blot](#)
- [Immunohistochemistry](#)
- [Immunofluorescence](#)
- [Immunoprecipitation](#)
- [Flow Cytometry](#)
- [Cell Culture](#)

MYBBP1A Antibody(N-term) - Images



MYBBP1A Antibody (N-term) (Cat. #AP19507a) western blot analysis in MDA-MB231 cell line lysates (35ug/lane). This demonstrates the MYBBP1A antibody detected the MYBBP1A protein (arrow).

MYBBP1A Antibody(N-term) - Background

MYBBP1A may activate or repress transcription via interactions with sequence specific DNA-binding proteins. Repression may be mediated at least in part by histone deacetylase activity (HDAC activity) (By similarity).

MYBBP1A Antibody(N-term) - References

Perrera, C., et al. J. Biol. Chem. 285(16):11775-11785(2010)

Fuller, H.R., et al. J. Proteome Res. 9(1):556-563(2010)
Redmond, A.M., et al. Clin. Cancer Res. 15(6):2098-2106(2009)
Lu, Y., et al. J. Lipid Res. 49(12):2582-2589(2008)
Al-azawi, D., et al. Oncogene 27(21):3021-3031(2008)